

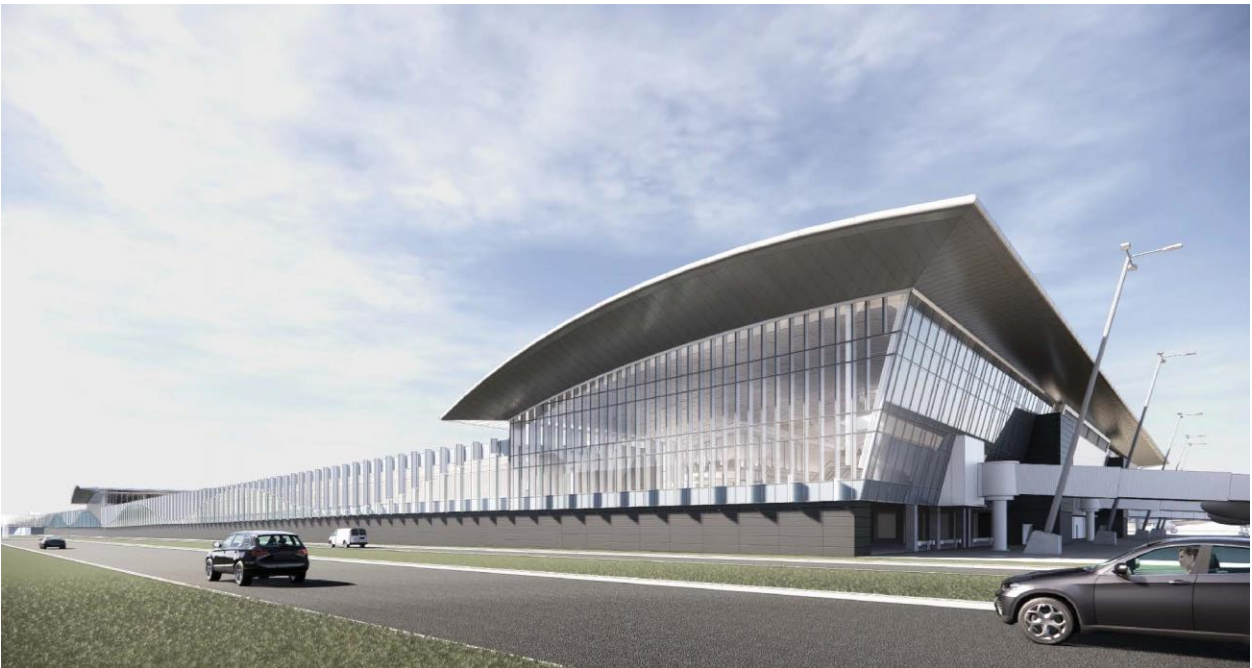


Culture For All.

CALL FOR ARTISTS

REQUEST FOR QUALIFICATIONS

ASC PUBLIC ART PROGRAM



Credit: "Perkins+Will in association with C DESIGN"

Multiple Public Art opportunities

Charlotte Douglas International Airport Concourse A Expansion–Phase II Charlotte, NC

An Arts & Science Council project
for the City of Charlotte and
Charlotte Douglas International Airport

SUBMISSION DEADLINE

FRIDAY, October 4, 2019 by 11:59 p.m. E.S.T. Applications will be received via (<https://asc.slideroom.com>), an online application system. There is no fee to submit qualifications.

SUMMARY

Arts & Science Council (ASC) is accepting qualifications from professional artists and professional artist teams for two original and site-specific art commissions as part of the “Concourse A Expansion–Phase Two” program at Charlotte Douglas International Airport (CLT).

PROJECT BACKGROUND

Charlotte Douglas International Airport has undergone remarkable growth over the past decade serving approximately 175 nonstop destinations around the globe and welcomes more than 46 million passengers annually. Accordingly, CLT recently initiated a \$2.5 billion capital investment program called “Destination CLT” that encompasses several terminal and airfield improvement and expansion projects intended to accommodate passenger growth forecasts through the year 2035.

“Concourse A Expansion - Phase I”, a component of the Destination CLT program completed in 2018, created an addition of nine gates north of the existing terminal to accommodate expanding air service and replace several existing gates. The new Concourse A consists of approximately 232,000 square feet and a new connector featuring a programmable lighting array embedded in exterior metal fins along the 850 foot long façade and the public artwork “Interconnected” by Refik Anadol.

Phase Two of the Concourse A expansion will extend the new concourse and integrated lighting feature to the north for a total length of approximately 2,550 feet and an additional 10 gates.

Project Scope of Work and Locations

The CLT Concourse A - Phase II Art Program is comprised of 2 opportunities for permanent, integrated artworks, each with differing budgets dependent on the projects’ respective size, prominence of location, and anticipated material and fabrication needs. The final project locations and scopes identified in the RFQ will be determined by ASC in close collaboration with CLT Airport and the project design team, with careful consideration of input from the selected artists or artist teams.

Please refer to the individual project descriptions below for a more complete understanding of the various Concourse A - Phase II art project areas, objectives and associated budgets.

1) Suspended Artwork at Concourse A [see Figs 3, 4, 7].

Budget: \$700,000.00 x 1 artist

Dimensions: 12’W X 86’L X 10’D (approx. 10,000 Cubic FT)

This area is visible from the end of the Concourse A - Phase I Corridor that joins the Concourse A East Lobby and air concourse areas. It is characterized by overhead clearances of approximately 35’ with ample daylight furnished by a clerestory-level skylight and glass curtain walls. This will be a highly visible area designed to engage visitors to planned airline club lounge and concessions, as well as passengers seated in the holding room areas awaiting flight departures. It is an ideal location for a dynamic and memorable art experience that can be enjoyed by a large and captive audience.

Due to the unique architectural features and functionality of this area, the ASC envisions the creation of a large-scale suspended artwork at this location to activate the open volumes, respond to the abundance of natural light, and engage passenger circulation on the upper mezzanine and ground floor below. The artwork should establish a strong, yet welcoming visual presence and reinforce Concourse A wayfinding by marking the transition between Concourse A Phases I and II.

The Suspended Artwork commission will be awarded to one applicant, with an associated budget not to exceed \$700,000—inclusive of all artist design fees and associated travel costs, insurance, fabrication, storage, transportation and installation of artwork on site at location.

2) Art Panels [see Figs 5,7].

Budget: \$200,000.00 x 1 artist.

Dimensions: Left Panel - ~28'L x 18'H (500 SF); Right Panel 13'x 28'x 8' (300 SF)

These two mezzanine level wall panels are prominently positioned, overlooking the Concourse Phase II Lobby opposite the large glass curtain wall feature. Passengers seated in the holding room and concession areas will have a clear, view of these elevated wall panels. It is an ideal location for a compelling art experience that can be contemplated by travelers and customers seated at upper and lower levels.

Memorable and monumental 2-Dimensional artworks or 3-Dimensional applied wall art / frieze are anticipated for this site.

The commissioned artist or artist team will be collaborating with a design team consisting of CLT Aviation Department architects and Arts & Science Council staff, a lighting designer and various design consultants. Exemplary communication and time management skills will be essential to the success of this project. The location and scope of the interior installation will be determined by Arts & Science Council staff and the project design team in concert with input from the selected artist or artist team.

The mezzanine wall panel commission will be awarded to one applicant, with an associated budget not to exceed \$200,000—inclusive of all artist design fees and associated travel costs, insurance, fabrication, storage, transportation and installation of artwork on site at location.

Please review the attached renderings at the end of this RFQ for a better understanding of the project location and scope of work before applying.

ARTIST ELIGIBILITY

This call is open to all professional artists in the U.S. and internationally. Eligible applicants must demonstrate the capacity to successfully complete a public art commission at this size and scope. Architects interested in applying must have successfully completed at least three (3) public art projects that are distinguished from infrastructure design within the last five (5) years to be considered eligible to participate in this opportunity. Artist teams must demonstrate prior experience designing and executing completed public art projects as the team described in the applicant's submittal. Eligibility must be demonstrated in the application materials submitted.

Applicants who have received a commission or purchase from ASC for over \$25,000.00 cannot be considered for another commission or purchase for another 3 years after the date of a signed contract

or letter of agreement. ASC staff, County or City staff, Public Art Commission members or their immediate families, are not eligible to apply for this project.

PROJECT BUDGET

A total budget of \$900,000 has been allocated to commission multiple site-specific and permanent artworks to be integrated into the Concourse A Phase II Expansion project. All budgets listed in this RFQ fully include artist-design fees and associated travel costs, insurance, fabrication, storage, transportation and installation of the artwork. The Public Art Opportunities advertised in the RFQ are funded by CLT's enterprise fund, a fixed percentage of which is allocated toward public art commission at the airport as mandated by the City of Charlotte Public Art Ordinance, adopted in 2003. All project budgets are pending final appropriations approved by the City of Charlotte. The CLT Airport enterprise fund is sustained by airport user and vendor fees and does not make any use of tax payer dollars.

ARTIST SELECTION

This solicitation process is being undertaken to enable the Public Art Commission to identify the most highly qualified artists for this opportunity. An artist selection panel comprised of local and national arts professionals and community stakeholders appointed by the Public Art Commission will review eligible application, determine a shortlist of finalists, interview three to five finalists and select one artist or team of artists. The selected artist or team of artists will be recommended to the Public Art Commission and the Board of ASC for final approval and contracting.

The commissioned artist or artist team will collaborate with a Design Team consisting of ASC Public Art staff, CLT Aviation Architects and stakeholders, Perkins and Will, and C Design. Exemplary communication and time management skills will be essential to the success of this project.

PROJECT SCHEDULE

	<u>Artist Selection</u>
September 09, 2019	Concourse A Phase II RFQ published.
October 04 , 2019	Artist application submission deadline.
October 2019	Committee reviews applications and selects 3 finalists per opportunity.
November 2019	Committee interviews finalists; awards 1 artist contract per opportunity.
	<u>Design Development</u>
January 22, 2020	Concept Design Proposal for Public Art Commission (PAC) review.
March 25, 2020	Schematic Design Proposal for PAC review.
May 27, 2020	Final Design for PAC review; notice to proceed with Fabrication upon PAC approval.
	<u>Fabrication & Installation*</u>
June 2020	Notice to Proceed
June 2022	Concourse A Phase II Completion

**Dates provided are estimates based upon ASC's current knowledge of preliminary project schedules and are only intended to assist artists in determining their own availability to participate in the program. Above dates in no way represent final approved schedules and are subject to change through future iterations of design and construction phases.*

SELECTION CRITERIA

Artists will be selected based on the following criteria, as evidenced in application materials and conversations with listed references:

- Artistic merit in concept and fabrication as demonstrated in submitted work samples.
- Proven ability to execute design development and management of fabrication and installation of permanent artworks specifically commissioned for and successfully integrated into new construction and/or architectural renovation projects.
- Proven ability to collaborate in the early phases of project development with design team members.
- Proven ability to present and articulate all conceptual, material and logistical aspects of proposals for public art to diverse stakeholders including but not limited to: commissioning agency staff, project managers and/or owners, community stakeholders and local press.

TO APPLY

Applications must be received via SlideRoom (<https://asc.slideroom.com>) by 11:59 p.m. Eastern Standard Time on **FRIDAY, OCTOBER 4, 2019**. There is no application fee to apply or use the SlideRoom online application system. The following materials will be required to be uploaded to SlideRoom:

- **Credentials:** Resume or Curriculum Vitae (CV) demonstrating professional history and skills or experience as a professional artist (maximum two (2) pages). For artist teams, each team member must submit an individual resume (two (2) pages maximum each)
- **Statement of Interest:** A brief introductory narrative that also provides insight about your interest in the project (one (1) page maximum)
- **Images:** Up to eight (8) images or three (3) digital video or movie files limited to two minutes each – of recent work completed within the past ten (10) years
- **Annotation:** Titles, date, budget, client, media, and dimensions of artwork
- **References:** Three (3) professional references who can speak to the artist's ability to meet deadlines, work with community, and create innovative work as part of a design team. Include name, organization, phone number, and email.

Please note: unrealized project proposals such as drawings, renderings and written descriptions of rejected submittals or commissions at less than 70% completion at time of submission will not be considered, without exception.

SLIDEROOM TECHNICAL ASSISTANCE

Applicants can receive SlideRoom technical support by emailing support@slideroom.com, or by accessing the online help desk: <https://support.slideroom.com>.

QUESTIONS REGARDING THE RFQ?

For questions regarding the CLT Concourse A Phase II, please contact ASC Program Director, Public Art CLT at (704) 330-0196 or email at amina.cooper@artsandscience.org. Please do not attempt to contact additional ASC staff-members, CLT personnel or Gresham, Smith & Partners regarding the Terminal Lobby Expansion RFQ as you will be redirected to the contact listed above. ASC will not distribute additional TLE documentation (renderings, elevations, and precise dimensions of project areas) until the artist selection process has been completed for the respective public art opportunities outlined in the CLT Concourse A Phase II RFQ.

ABOUT THE ARTS & SCIENCE COUNCIL (ASC)

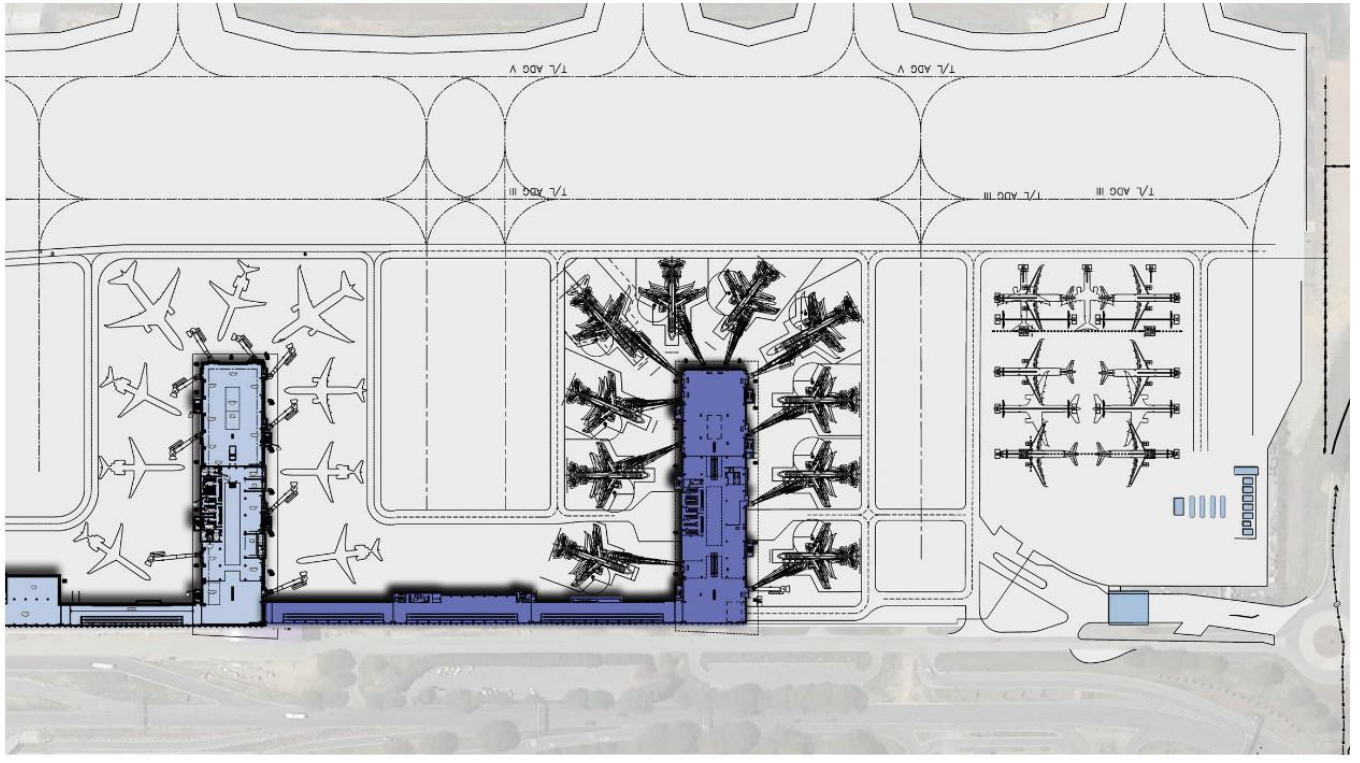
Since 1995, the Arts and Science Council has managed the public art programs for the City of Charlotte and Mecklenburg County. The Public Art Commission is responsible for the community- based artist selection and design review process for each public artwork. The commission is an appointed board of volunteer citizens from the arts, education and business sectors. In 2003, Mecklenburg County Board of Commissioners and the Charlotte City Council adopted ordinances that appropriate one percent of eligible capital improvement project funds for public art. The ordinance helps ensure that artworks enhance our public spaces and become an integral part of urban and economic development efforts. See more at: <http://www.artsandscience.org/>

ABOUT CHARLOTTE DOUGLAS INTERNATIONAL AIRPORT (CLT)

Charlotte Douglas International Airport is owned and operated by the City of Charlotte. The Airport is operated financially on a fully self-sustaining basis – no general fund revenues have ever been or are appropriated to the cost of the facilities or operations. Rather, Airport revenues defray all capital and operating costs including the cost of City furnished services. Airport revenue types include the airfield, terminal area, concessions, parking and the cargo area. This gives the Airport its annual operating budget. Each year, CLT contributes nearly \$12 billion to the local economy. The Airport continues to build for the future through the Destination CLT development program. See more at: <http://www.cltairport.com/Pages/default.aspx>

PLEASE REVIEW RENDERINGS ON RFQ PAGES 7-10 BEFORE APPLYING

OVERALL SITE PLAN – CONCOURSE A PHASE II EXPANSION [Fig. 1]



CONNECTOR VIEW LOOKING NORTH [Fig. 2]



CONCOURSE LOBBY VIEW [Fig. 3]



MEZZANINE VIEW LOOKING NORTH [Fig. 4]



CONCOURSE VIEW LOOKING EAST TO CONNECTOR [Fig. 5]



MEZZANINE VIEW LOOKING WEST [Fig. 6]



CONCOURSE A PHASE II ADDITION FLOOR PLAN [Fig. 7]

