



REQUEST FOR QUALIFICATIONS

Qualifications are requested from artist and/or artist teams interested in creating site specific public artwork(s) for Colorado State University-Pueblo's new Center for Integrated Health & Humanities.



Exterior view of Center for Integrated Health & Humanities (formerly the Psychology Building) from the Campus Paseo, Architect's rendering

DEADLINE FOR SUBMITTAL: January 6, 2020

TOTAL ART BUDGET: \$104,000

NAME OF INSTITUTION: Colorado State University-Pueblo

ABOUT COLORADO STATE UNIVERSITY-PUEBLO

Colorado State University-Pueblo is committed to excellence, setting the standard for regional comprehensive universities in teaching, research, and service by providing leadership and access for its region while maintaining its commitment to diversity.

In 1933, the institution was incorporated as The Southern Colorado Junior College. Classes took place on the top floor of the Pueblo County Courthouse. In 1936, the Colorado Fuel and Iron Corporation donated the first building on the Orman Avenue campus site. One year later, local citizens decided to support the institution with county taxes. They organized the

Pueblo County Junior College District, and the institution was renamed Pueblo Junior College. In 1951, PJC became the first accredited junior college in Colorado.

A decade later, Colorado's General Assembly enacted legislation, effective in 1963, changing PJC to a four-year institution -- Southern Colorado State College -- to be governed by the Board of Trustees of State Colleges. SCSC received accreditation in 1966 and opened on the new campus. Three years later, the State Board of Agriculture assumed governance of the University. In 1986, USC, Colorado State University and Fort Lewis College joined to form the Colorado State University System. Over the next 15 years, USC and CSU increasingly collaborated to bring more educational resources to southern Colorado. In spring 2002, Colorado's General Assembly passed legislation that changed the name of the University's governing board to "Board of Governors of the Colorado State University System," renamed USC "Colorado State University-Pueblo," and approved a new mission for the University. The name and mission changes became official on July 1, 2003.

Colorado State University-Pueblo is a comprehensive state university with an enrollment of about 4,000 students, including nearly 100 international students. CSU-Pueblo is a Hispanic Serving Institution, meaning at least 25% of the students are Hispanic. Fully accredited and part of the Colorado State University System, CSU-Pueblo provides relevant professional coursework, superior instruction with a small professor-to-student ratio, and state-of-the-art technology for an ever-changing global economy. Invaluable hands-on experiences prepare CSU-Pueblo graduates for the demands of the modern world.

CSU-Pueblo's campus of more than 275 acres, crowns the north end of Pueblo, a historically and culturally rich city of more than 100,000 located in the colorful Pikes Peak region of Southern Colorado. Pueblo is situated on the Front Range, within convenient driving distance of both Denver and Colorado Springs. CSU-Pueblo offers twenty-seven undergraduate programs in the College of Science and Mathematics, the Hasan School of Business, the College of Humanities and Social Sciences, and the College of Education, Engineering and Professional Studies. CSU-Pueblo's Vision 2028 is to establish the institution as the people's university of the Southwest United States by 2028.

PROJECT DESCRIPTION – ABOUT THE CENTER FOR INTEGRATED HEALTH & HUMANITIES

Colorado State University- Pueblo's Psychology Building, through a \$16.8 million state-funded renovation, is being redesigned to be a center for interdisciplinary collaboration between the various departments and programs focused on Health Sciences, Nursing, the Humanities, Social Sciences, Technology, and Data Sciences. The building, to be renamed the Center for Integrated Health & Humanities (CIHH), will house state-of-the-art simulation labs for Nursing, distance learning classrooms, and will support students' needs for collaborative spaces.

The CIHH building will emphasize modern classrooms that are small in size, reflecting the current practice of personal attention to students. The building will also support the needs of Student Health Services and Counseling Center, with careful attention paid to sound-proofing the renovated building to mitigate the privacy concerns of students utilizing the counseling

services. Some key goals for the function of the building include flexible, mixed-use spaces; a new entry on the main level and on the Campus' central Paseo; the opportunity for collaboration between programs; a design that allows for an innovative approach to student learning; and incorporating state-of-the-art technology.

In addition to the Nursing simulation labs, Health services and Counseling Center, and general classrooms, the renovated building will have space for multiple academic departments, Psychology laboratory space, offices, and the Language Center, which serves as a campus gathering space. The renovated design was structured around created a meandering path through the building, to allow for a flow of movement that best reflected the student's experience with the programs and services provided within. The architect was inspired by the concept of erosion in its design process, as the Arkansas River is of central importance to the Pueblo community. Every student at CSU-Pueblo is impacted and will flow through the CIHH building. The building's design utilizes materials that embrace layers and the passage of time, such as exposed infrastructure on the ceiling, lots of glass, and materials that show their construction, such as showing the grain of wood or de-constructed carpet. The renovation will increase the sunlight entering the building with additional windows and there will be elements of biophilia throughout, including greenery. Wayfinding will be accomplished through colored hallways. Based on interest and feedback from building users, the architect also incorporated an exterior labyrinth design into the concrete on the plaza of the building.

OPPORTUNITIES FOR ARTWORK

The Art Selection committee is looking to commission artwork for the interior of the Center for Integrated Health & Humanities. The committee is interested in an artwork or artworks that activate the lobby area on the main floor and then journey through the building, up the main stairwell to the lobby space of the second floor. The artwork can be ceiling or wall-mounted, as there is no space for free-standing, sculptural work. The second floor lobby will be the livelier and more collaborative-focused public area of the two lobbies. There is also a long wall near the north side window on the 2nd floor, near a coffee and meeting area, that is a possible location for artwork.

The Selection Committee would like the artwork to take into account the University's 2028 vision of framing CSU-Pueblo as the "Gateway to the Southwest" and "the People's University" for the region, as well as the school's role as a Hispanic Serving Institution. The Committee would like the artwork to have a connection to the building's design focus on circular or meandering pathways to learning, as well as the thematic focus of erosion/flow and the labyrinth.

Artists from the Southwest region are encouraged to apply.

BUDGET: \$104,000

The contract amounts are inclusive of all costs associated with the project including, but not limited to, the artist's design fee, other consultation fees such as structural engineering, insurance, materials, fabrication, transportation and installation, including any building or site modification required, travel to and from the site, per diem expense, project documentation, contingency to cover unexpected expense and any other costs of any kind. Out-of-state semi-finalist artists will receive \$1,500 and in-state semi-finalists will receive \$1,000 as an honorarium for the creation of a design proposal.

COLOADO ART IN PUBLIC PLACES PROGRAM

In 1977, the Colorado General Assembly passed the Art in Public Places Act requiring that 1% of the construction costs of new or renovated state-owned buildings be used to acquire works of art for permanent installation at the project site. Colorado Creative Industries is responsible for implementation of the law. All works of art commissioned pursuant to this request are owned by the State of Colorado via Colorado State University-Pueblo. De-accession of the public art, if necessary, will follow the policies and procedures established by Colorado Creative Industries.

ELIGIBILITY

All applicants must be legal residents of the United States. Artists residing in the Southwest region are encouraged to apply. The artists or artist teams must have the skills and experience commensurate with the responsibility of successfully completing a major public art installation. The Program is open to all artists regardless of race, color, creed, gender, gender variance, national origin, age, religion, marital status, political opinion or affiliation, or mental or physical handicap.

APPLICATION PROCESS

All applications for this project are being accepted through the online platform, CaFÉ™ (www.callforentry.org). No hard copy or emailed submissions will be accepted. The applicant will be asked to submit digital images of art (see below for more information), a resume, and a brief statement of interest. There is no application fee to apply or to use the CaFÉ™ online application system. Assistance in using the CaFÉ™ system is available during regular business hours by calling 303-629-1166, 1-888-562-7232 or email cafe@westaf.org.

Digital Images. In order to be considered for this project, the applicant must electronically submit, via the CaFÉ™ system, no less than six (6) and no more than eight (8) digital images of previously completed artworks. Instructions on how to use CaFÉ™ and format images can be found at www.callforentry.org/image_prep.phtml.

Resume: Submit a current résumé, via CaFÉ™, that outlines professional accomplishments as an artist. If applying as a team, please submit a resume for each artist, with the lead artist's resume first.

Statement of Interest: A statement of interest of 250 words or less must be submitted via CaFÉ™. It should briefly outline the interest in the specific opportunity and applicable experience.

SELECTION PROCESS AND SCHEDULE

The Art Selection Committee will review all complete submittals. A short list of semi-finalists will be invited to prepare and present a final proposal in person. Final selection(s) will be made from the semi-finalists' proposals by the Art Selection Committee and approved by the Creative Industries Council. The approximate schedule is as follows:

Deadline for entry (via CaFÉ™ system): January 6, 2020 11:59 pm MST

Semi-finalists notified: January/February 2020

Semi-finalist presentations to the committee: February/March 2020

Building construction completed: November 2020

Building Occupancy: 2021

QUESTIONS

If you require more information or clarification, please contact Ruth Bruno, Public Art Program Manager, at 303-892-3813 or ruth.bruno@state.co.us.

ADDITIONAL SOURCES OF INFORMATION

<https://www.csupueblo.edu/>

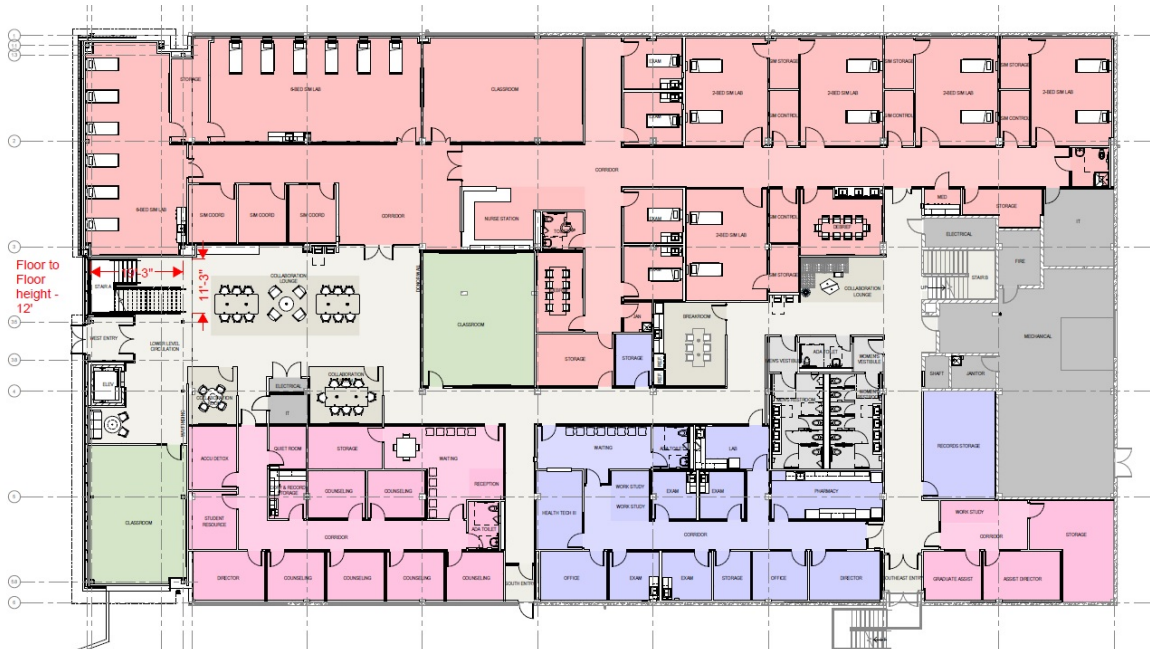
<https://www.csupueblo.edu/about/campus/construction-projects/psychology-building.html>

<https://www.csupueblo.edu/vision2028/>

BUILDING IMAGES - DESIGN BY DLR GROUP



Main floor lobby of Center for Integrated Health & Humanities, view from west entrance, Architect's rendering



Main floor of Center for Integrated Health & Humanities, building plan



2nd floor lobby of Center for Integrated Health & Humanities, view looking west towards main stairwell, Architect's rendering



2nd floor of Center for Integrated Health & Humanities, building plan

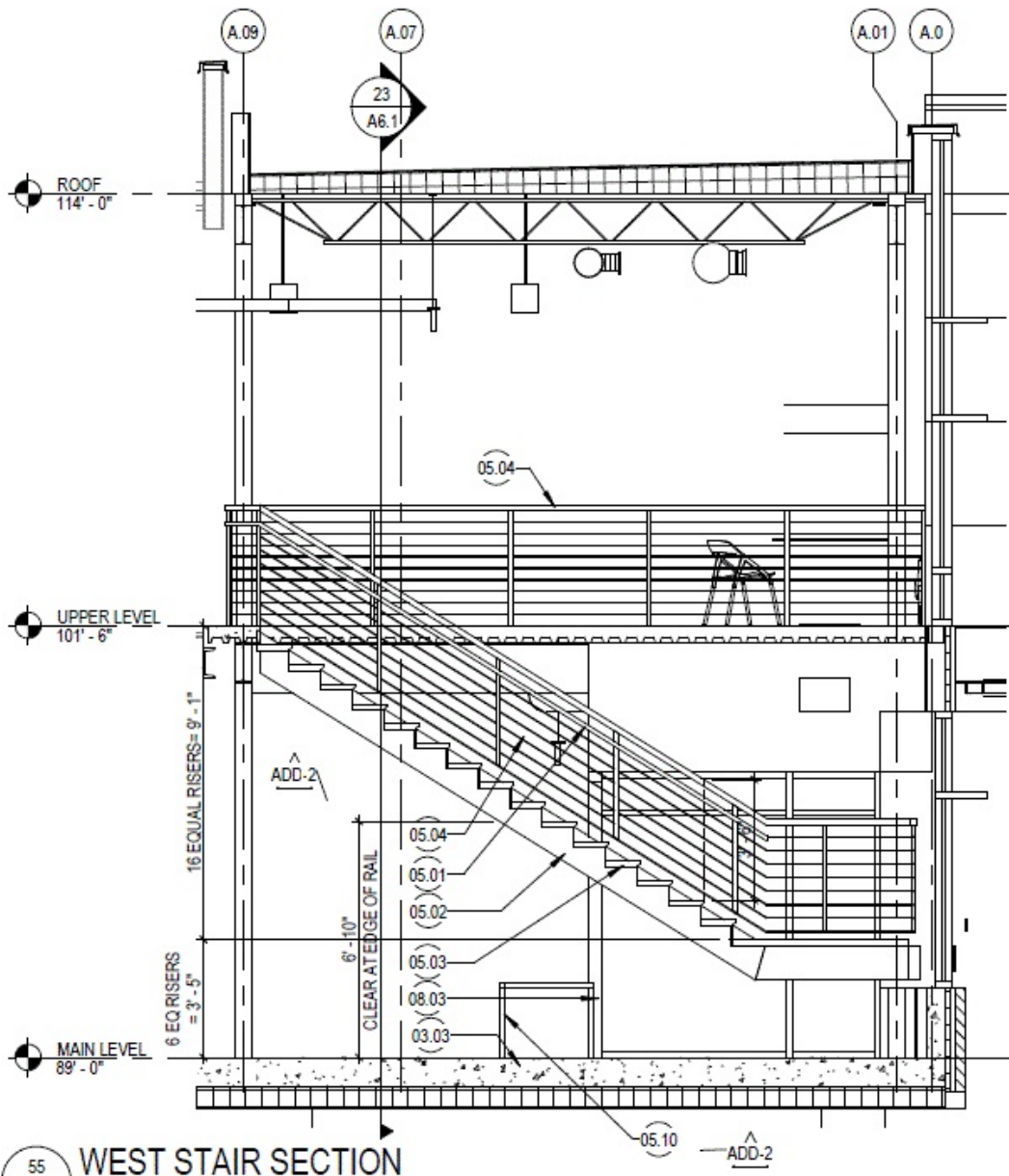


Collaboration area of Center for Integrated Health & Humanities, Architect's rendering



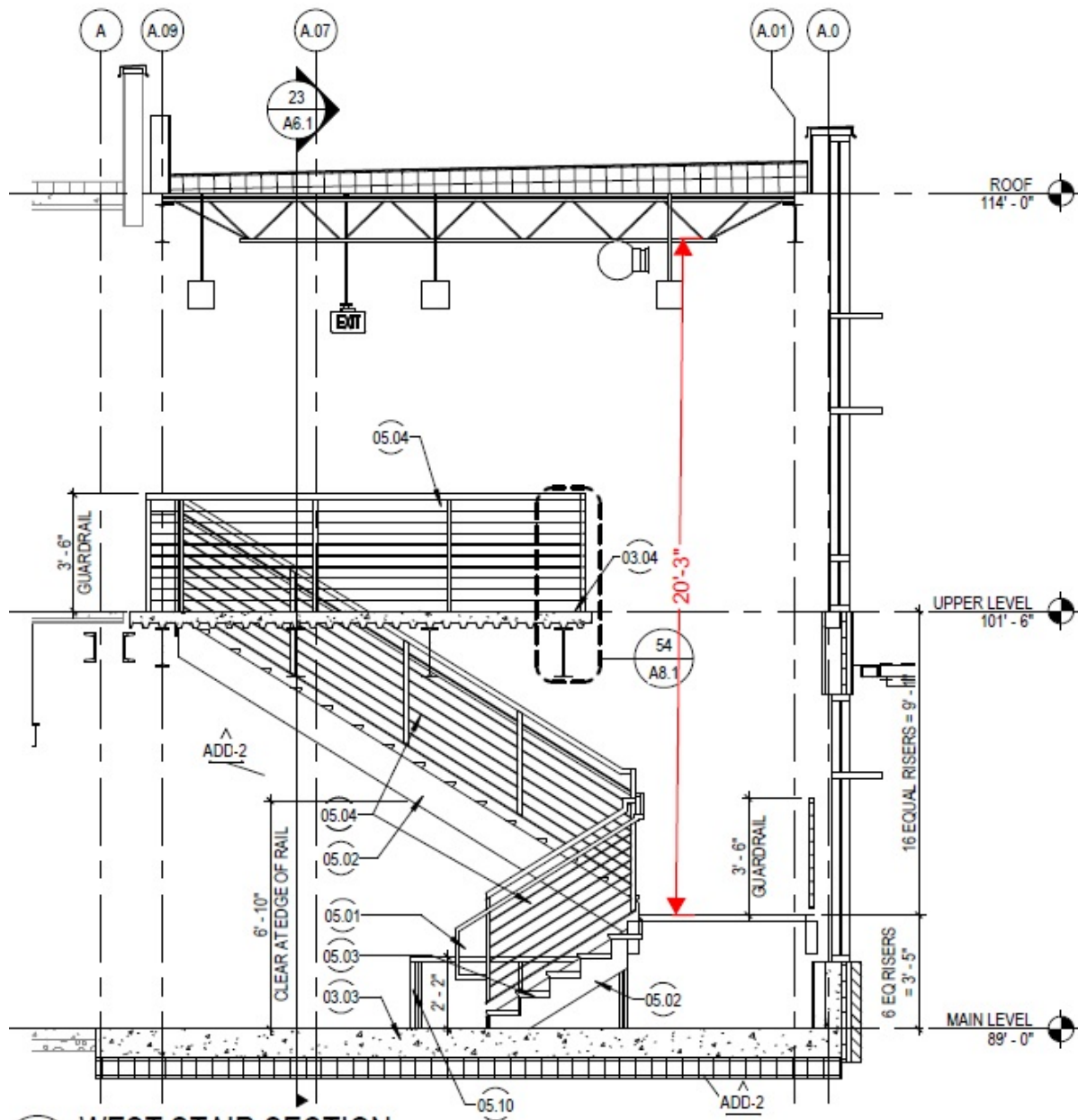
Open office area of Center for Integrated Health & Humanities, north side of 2nd floor, Architect's rendering

45 WEST STAIR SECTION
 A8.1 SCALE: 1/4" = 1'-0"



55 WEST STAIR SECTION
 A8.1 SCALE: 1/4" = 1'-0"

West stairwell section



45 WEST STAIR SECTION
 A8.1 SCALE: 1/4" = 1'-0"

West stairwell section