

UTAH ARTS & MUSEUMS PUBLIC ART PROGRAM  
REQUESTS ARTIST QUALIFICATIONS  
for the  
Snow College - Science Center  
Ephraim, Utah



Request for qualifications from artists and/or artist teams interested in creating site specific artwork(s) for the Science Center on the campus of Snow College in Ephraim, Utah.

**DEADLINE FOR MATERIALS: December 7, 2015**

#### THE SNOW COLLEGE SCIENCE CENTER

This new 56,600 square foot, three story, building on the Snow College (Ephraim) campus will house the College's Division of Science and Mathematics and contains a wide variety of spaces and functions to support the Division. These spaces include teaching laboratories, research laboratories, classrooms, faculty offices and student study areas.

This new building will be situated on a prominent corner of the core campus and provides an opportunity to create a gateway element for Snow College. The building site, on the southwest end of the campus is adjacent to two historic buildings and another building that was designed and constructed to simulate the adjacent historic building.

To maintain a similar scale and massing of its historic neighbors, the design has divided the building's program into two smaller buildings; one a laboratory wing and another wing that is dedicated to classrooms and offices. The two buildings are linked by a sweeping bridge and separated by a science courtyard. All three levels of the bridge, bathed in natural light, will contain student study space that overlooks the courtyard. This courtyard is oriented so that the center mall of the campus leads directly into the space.

#### BUILDING DESCRIPTION:

The design of the new building borrows several elements and conditions from neighboring structures on campus. Similar window proportions, arched lintels, roof form, and materials (brick) are all utilized in the design to tie the new Science and Mathematics building to the campus and to the historic core. Large windows on the north and south elevations of the laboratory wing and the classroom/office wing allow learning to occur in spaces flooded with controlled daylight (no glare).

Snow College has an enrollment of over 5000 students, and offers some of the smallest classes in Utah -- with the finest "teaching" faculty anywhere. Teaching, because unlike some larger universities, professors at Snow College spend their time in classrooms and labs with students ....no teaching assistants here! <http://www.snow.edu/>



Founded in 1888 by Mormon settlers in Sanpete County, Snow College was first called Sanpete Stake Academy and was begun at the urging of local Latter Day Saints stake president Canute Peterson. Built entirely with local donations, the school had a rocky start as the locals struggled to finance their dream. The first classes were held on the top floor of the co-op store, a building still standing at the corner of 100 North Main Street in Ephraim. Newton E. Noyes served as school principal for twenty-nine years (1892-1921) and gave his name to the administration building, which was dedicated on 5 November 1909. Financial woes sent Noyes to LDS Church headquarters to plead for church assistance for the school, and Mormon Church President Lorenzo Snow authorized \$2,000. In gratitude, the Sanpete patrons named the school Snow Academy after Lorenzo and his good friend and fellow Mormon leader Erastus Snow. The name of the school was changed to Snow Junior College and in 1923 to its present name of Snow College.

Snow became a state college in 1932-33. A celebration of the school's first fifty years in 1983 revealed the remarkable characteristics of this small school, including a strong and loyal alumni group, which boasts a long list of distinguished people; dedicated faculty who were willing to sacrifice salaries for the school's survival; and a common feeling that those affiliated with the school have called the "Spirit of Snow."

Besides having an outstanding staff, the school has been recognized for its theater productions, music contributions, women's volleyball program, football program (including the 1985 Division II national championship team), and a nationally ranked forensics program (which also took top honors in 1985.) The school is internationally recognized for its ESL (English as a Second Language) program, which draws students from all over the world. Snow was the first two-year college in Utah to begin an honors program that was recognized by the state universities, allowing students to enter those schools' honors programs as juniors at the completion of their two years at Snow. Snow College takes its greatest pride from being recognized as a premier transfer institution.



## EPHRAIM, UTAH

Ephraim is a city in Sanpete County, Utah. The population was 4,505 at the 2000 census. Ephraim located in the middle of the state approximately two hours south of Salt Lake City area and seven miles north of Manti on U.S. Highway 89.

Ephraim, the largest town in Sanpete County, was founded by a lone settler, Isaac Behunin, who claimed 40 acres on Pine Creek in 1853. By 1854, Behunin found that he was no longer alone. Several families tagged along and built homes in the place they called Cottonwood Creek. For security the community soon erected a fort approximately one square block in size called Fort Ephraim, getting its name from one of the tribes of Israel mentioned in the Old Testament. The security of the fort drew a diverse group of settlers to the area, Danes, Swedes, and Norwegians. When the Danes moved in, they called it "Little Denmark".

For more information about Ephraim <http://www.ephraimcity.org/> For more information about Central Utah and San Pete County <http://sanpetecounty.org/>

## COMMITTEE STATEMENT

The Snow College Science Center is projected to be a living building. The architecture and construction will create an edifice that permeates the air with a sense of science past, present and future. Upon entering the structure one will encounter a sense of being in a place where science happens. Impressive displays will greet them at each entry and interactive stations will engage individuals to draw them into the world of science. Upon exiting, they will leave with a sense that science has contributed to their personal lives and with a desire to make science a greater part of their existence.

The Committee wants the artist's contribution to integrate with the theme of a living building to the extent that it promotes active science. The building itself will serve as the edifice that promotes discovery in central Utah. It is hoped the art, in whatever form it takes, will help inspire kids of all ages to become interested in pursuing science as a life-long journey. Ideally, the art will stir the soul, encourage one to contemplate, encourage engagement with other media and displays, and leave a person with a sense of awe.

In short, the Committee is searching for an artist that will help the Committee and the College create something for this facility that might inspire the next generation. It is desired the art commission will encourage individuals to engage directly and tangibly with it. In essence, one could feel a part of the exhibits or part of the inspiration. The goal is simply leave visitors with a sense of awe.

The design of the building provides many opportunities for the integration of artwork into the architecture and site. The Selection Committee is open to artist suggested sites and has also identified some of the opportunities artists may consider:

- Southwest building entry
- Electrical room wall
- Center stair at the bridge
- Courtyard

(Drawings attached to this RFO show these possible site art integrations indicated by red shading.)



## SELECTION CRITERIA

The Committee is looking for an artist to be a member of the design team to work collaboratively to create an art installation that incorporates into the building design. The selection committee is seeking artists that are willing to be engaged in this collaborative process and whose work contributes to this vision of the melding of art and science as mentioned above.

The Committee encourages artists to provide work samples of their work that demonstrates examples of site specific, scientifically appropriate and integrated work.



## BUDGET

**\$126,000** is available for all related expenses of this Public Art commission(s) including (but not limited to) artist fees, fabrication, insurance, shipping, travel, installation, documentation, etc.

## ELIGIBILITY

Resident American or legal resident artists / artist teams are encouraged to apply. Art selection committee members, Utah Arts & Museums, and VCBO employees, family members or consultants are not eligible to apply for this commission.

## SUBMISSION OPTIONS, INSTRUCTIONS AND REQUIRED MATERIALS

Interested artists may submit applications online or hard copy. The deadline is the same for both methods and is not a postmark deadline. Please do not include supplemental materials beyond the requirements listed below. All applications must include the following:

### ON-LINE METHOD:

- Register at [www.callforentry.org](http://www.callforentry.org) and follow the directions for registration and submitting material for this Public Art Request for Qualifications

If the artist's work cannot be documented well with still image you may submit movie files via the "Hard Copy Method" listed below. Movie files cannot be submitted via the online method.

### HARD COPY METHOD:

- A PC compatible CD labeled with applicant's name, and contact information containing:
- A letter of interest of not more than three typewritten pages in pdf format. This letter should include the artist's reasons for interest in this project in particular. In doing so, the artist should also describe how his/her work and/or experience relates to the project.
- Up to six (6) images maximum of previous site-specific public work. All images must be in JPEG format, 1920 pixels maximum on the longest side, 72 dpi, with compression settings resulting in the best image quality under 2MB file size. The image files should be named so that the list sorts in the order of the image listing.

- A pdf document indentifying each image to include title, year, medium, dimensions.
- A professional resume in pdf format

If the work cannot be documented well with still images a DVD (of no more than 3 minutes) may be submitted as documentation of artist's projects. Please note only one media, movie file or images, can be presented to the committee per artist in this preliminary phase.

If the artist wishes the material returned, an addressed and stamped envelope of ample size and postage for return of the CD or DVD should be included. Material that is not accompanied by a stamped envelope cannot be returned.

Utah Arts & Museums will not be responsible for applications delayed or lost in transit. While all reasonable care will be taken in the handling of materials, neither the Utah Division of Arts & Museums nor the Snow College Science Building Art Selection Committee will be liable for late, lost or damaged materials or electronic files. Faxed or e-mailed applications cannot be accepted.

The Snow College Science Building Art Selection Committee reserves the right to withhold the award of a commission or re-release the call for entries.

## DEADLINE

Complete application packages must be RECEIVED on or before **December 7, 2015** by 5 p.m. (THIS IS NOT A POSTMARK DEADLINE.) All supporting materials must accompany application.

Please send, deliver or courier applications to:

Jim Glenn, Utah Public Art Program  
Attention: Snow College Science Building  
Utah Arts & Museums  
300 S Rio Grande  
Salt Lake City, UT 84101

## SELECTION PROCESS AND SCHEDULE

The Selection Committee will review all material properly submitted. Finalists will be selected from the first phase of applicants submitting qualifications. Selection of the commissioned artist will be based on interviews between the finalists and the committee. Finalist will be asked to come to the interview on **January 25, 2016** with an idea(s) of directions they may be interested in pursuing for the project with the understanding these ideas may change in the collaborative process. Finalists are not required to come to this interview with proposals or maquettes but may do so if they feel it important to convey their ideas.

Due to the time table of this project and the desire to include the commissioned artist(s) in the design plan, the selected artist(s) will be asked to participate in design work as soon as possible after notification by the committee.

An honorarium of \$1,200 will be extended to the finalists to cover the costs associated with the interview and travel. This honorarium will be applied toward the commission amount for the artist(s) awarded the commission. Final selection(s) will be made from the finalists interviewed.

Schedule:

November 2015 - Release RFO

December 7, 2015 - Deadline for receipt of preliminary materials

December 17, 2015 - Committee Review

January 25, 2016 - Finalists interviews

## ARTIST SELECTION COMMITTEE

Craig Mathie	Snow College, VP for Student Success
Gary Carlston	President, Snow College
Adam Larsen	Artist and Snow College Associate Professor of Art
Dan Black	Science Chair, Snow College
Brian Bales	Utah Division of Facilities Construction & Management
Whitney Ward	VCBO Architecture
Pierre Langue	Utah Arts Council Board of Directors

If you have any questions about this or other projects information is available at: [www.utahpublicart.org](http://www.utahpublicart.org)  
Or contact: Jim Glenn at 801-245-7271 or e-mail at: [jglenn@utah.gov](mailto:jglenn@utah.gov)  
Felicia Baca at 801-245-7272 or [fbaca@utah.gov](mailto:fbaca@utah.gov)

All images courtesy VCBO Architecture

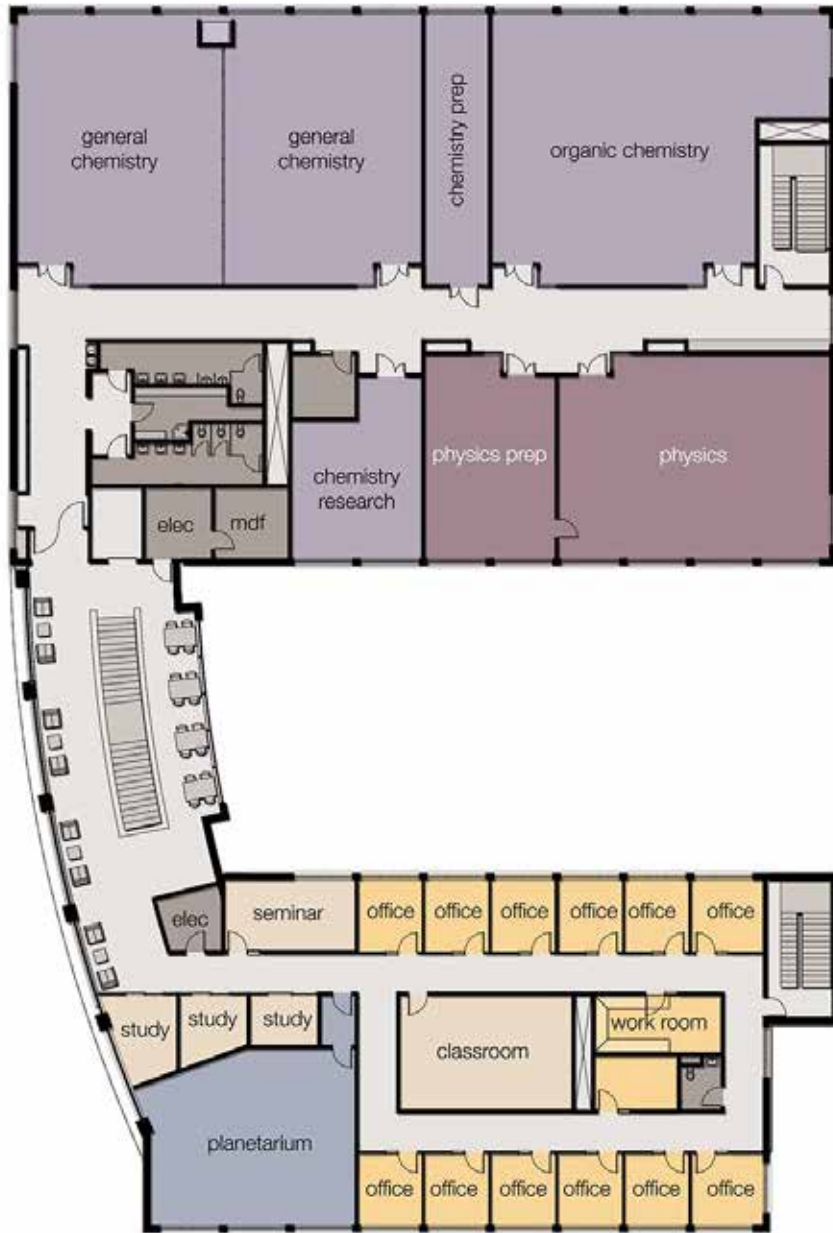


LEVEL ONE  
New Science Building | Snow College

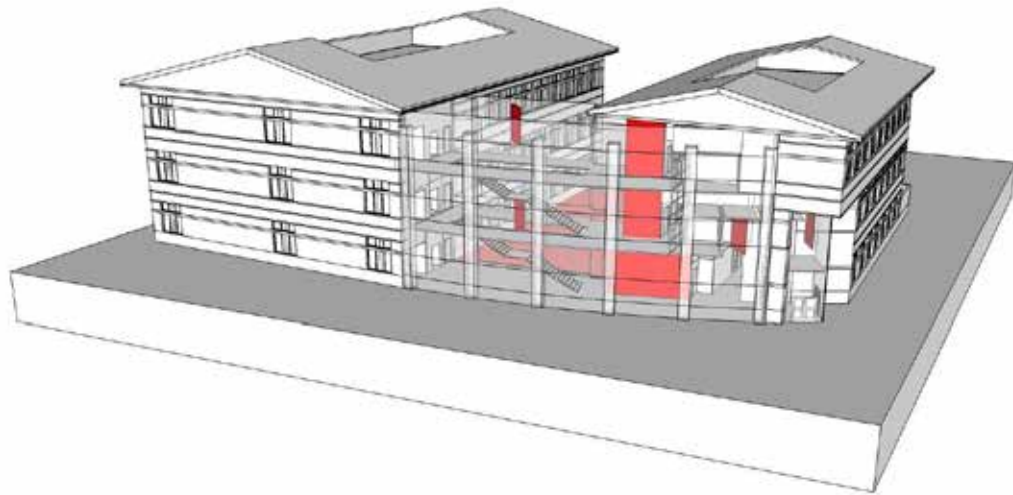




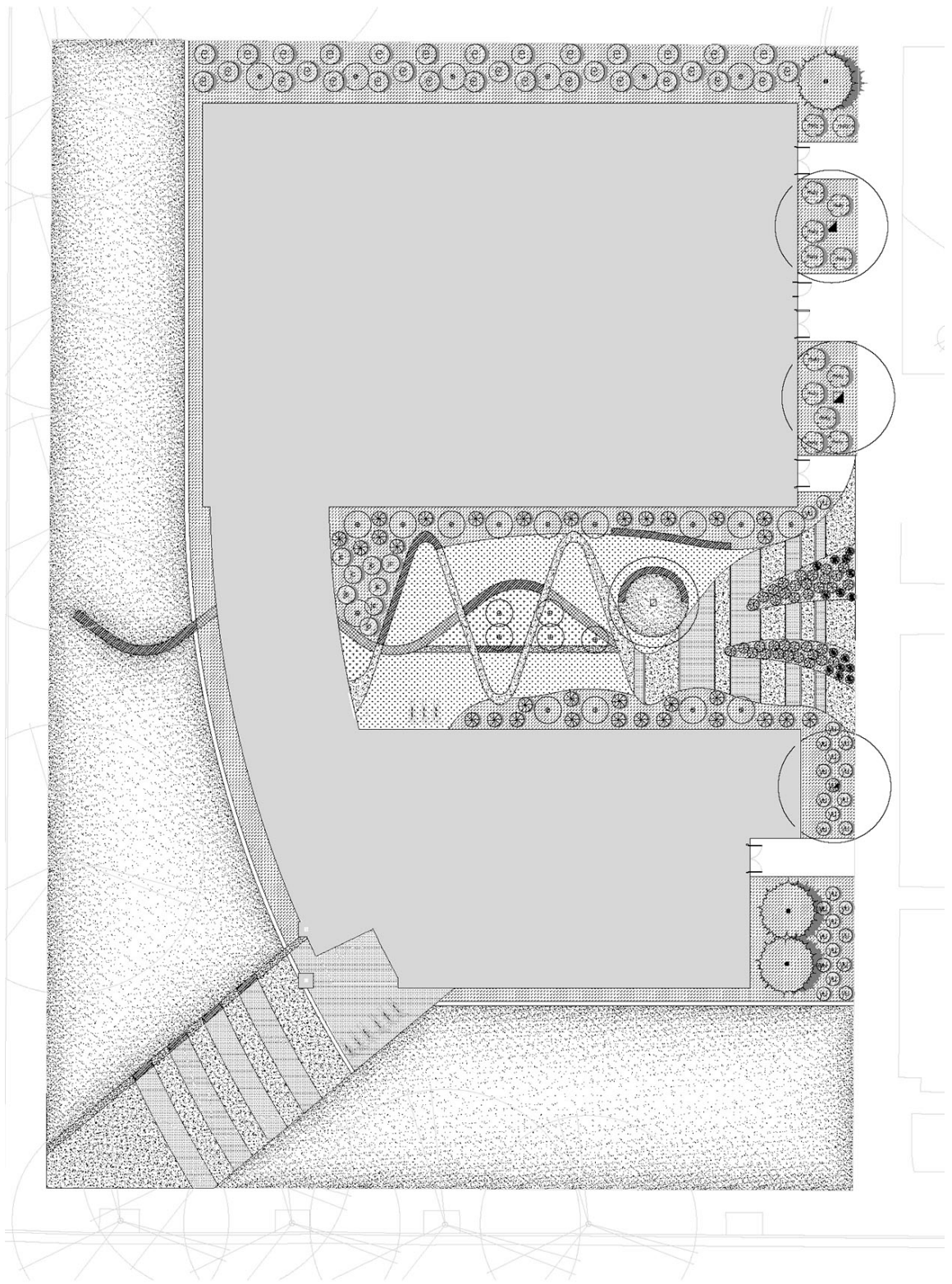
LEVEL TWO  
New Science Building | Snow College



LEVEL THREE  
New Science Building | Snow College



Art site possibilities marked in red



Site / Building footprint