

GLASS CITY RIVER WALL™

www.glasscityriverwall.org

REQUEST FOR QUALIFICATIONS:

Permanent visual installation for ADM grain silo facility in Toledo, Ohio.



MISSION:

The Steering Committee of the Glass City River Wall Project is seeking qualifications from artists to support the installation of an artistic mural at the ADM (Archer Daniels Midland) Grain Silo facility in Toledo, Ohio.

It is our committee's goal to sponsor this installation at the silos that grace the east side of the Maumee River, near downtown Toledo.

We have created this public art project as a way of demonstrating our commitment to urban renewal and to showcase our city's vibrant culture, community history and ADM's mission.

The goal of the steering committee is to gather unique, diverse and community focused volunteer team members that can help shepard the many moving parts necessary to bring a project of this scale to life.

The individual or firm selected will work directly with the Steering Committee of the Glass City River Wall Project, on the creation of a permanent, multi-phased artistic installation at this riverfront site.

PROJECT BACKGROUND:

The Archer Daniels Midland Company is an American global food processing and commodities trading corporation, headquartered in Chicago, Illinois. The company operates more than 270 plants and 420 crop procurement facilities worldwide, where cereal grains and oilseeds are processed into products used in food, beverage, nutraceutical, industrial, and animal feed markets worldwide.

ADM has a grain silo facility on the east bank of the Maumee River, near downtown Toledo. This facility is in a very prominent and visible location. It is visible from both I-75, a major expressway, the river and the city's downtown. The facility is well-maintained, but very industrial and an aesthetic negative on the city's key waterfront.

Stakeholders at ADM corporate, and the local silo facility have generously agreed to offer their facility for the purpose of this community focused beautification project under the supervision and guidance of our Steering Committee.

To date, the Steering Committee has developed the following working vision for this program:

- Create a multiphased public art installation for an outdoor environment that reflects the spirit of Toledo, Ohio and ADM's mission.
- Select a dedicated and qualified artist or artist team that can demonstrate artistic excellence, **has expertise working within the vast scale of this complex environment**, while also being able to complete this project on time and within budget.
- Select an installation contractor that can work with our selected artists to bring the collective vision to life through a multi-phased installation process.
- Complete the first phase of the project by June 2021, as the city will host an international golf tournament in August 2021.

STEERING COMMITTEE MEMBERS:

Our group of community advocates, business and design professionals includes:

Beckett Baither, *Communica*

Jason Boyer, *ADM*

Kim Collins, *Collins Reporting*

Lisa Baer Dewhirst, *Lyden, Chappell, and Dewhirst*

Marc Folk, *Toledo Arts Commission*

Christina Kasper, *Art Expressions*

Ashlee Layman, *Destination Toledo*

Nicole LeBoutillier, *Perrysburg Energy*

Nathan Matimoe, *Toledo Arts Commission*

Susan Reams, *1% for Arts Initiative creator, Art in Public Places Committee/The Arts Commission*

Molly Thompson, *Perrysburg Energy*

Valerie Thompson, *ProMedica*

Brandy Wimberly, *Spaceshop*

HIGH LEVEL PROJECT PHASES AND TIMELINE:

Phase I: May 2020-June 2021

- Receive Qualifications from interested artists
- Provide stipend for selected artists to review site
- Review selected artists vision and proposals
- Select the artist/s complete vision and concept
- Receive approval for artistic vision from community leaders and ADM
- Approve corresponding budget for installation and long-term maintenance
- In tandem, work with the artist to select an installation contractor
- Contractor works to prep the surface of the silos for mural installation
- Launch Phase I mural installation
- Complete Phase I by June 2021 and Solheim Cup <http://solheimcup.com/>

ABOUT TOLEDO AND THE SILO SITE



Toledo was founded in 1833 on the west bank of the Maumee River, and benefited from its position on the railway line between New York City and Chicago.

The first of many glass manufacturers arrived in the 1880s, eventually earning Toledo its nickname: "The Glass City." It has since become a city with an art community, auto assembly businesses, education, healthcare, and local sports teams.

The population of Toledo as of the 2010 Census was 287,128 making it the 71st-largest city in the United States with a 2010 population of 608,145, and was the sixth-largest metropolitan area in the state of Ohio.

Toledo continues to thrive with the troubles and triumphs typical of many smaller cities in the industrial midwest. What makes Toledo different and special is our region's focus on family, arts, innovation and education, and our roots firmly planted in the unique aspects of our geographic location and our historically significant past. For more information visit: <https://toledoregion.com/>

ABOUT ADM's MISSION

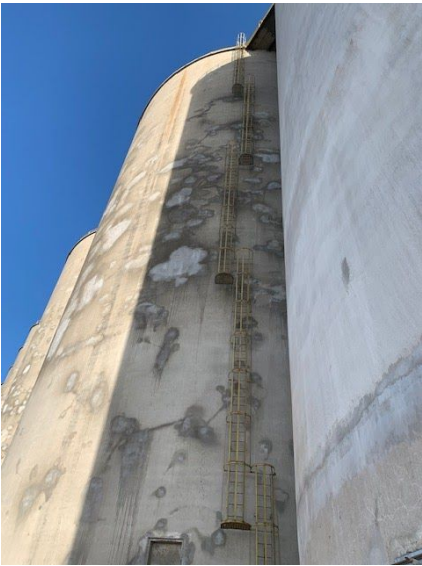
ADM Cares helps sustain and strengthen communities where ADM colleagues work, live and operate by directing funding, volunteerism, and industry knowledge to initiatives and organizations that are driving meaningful social, economic and environmental progress worldwide.

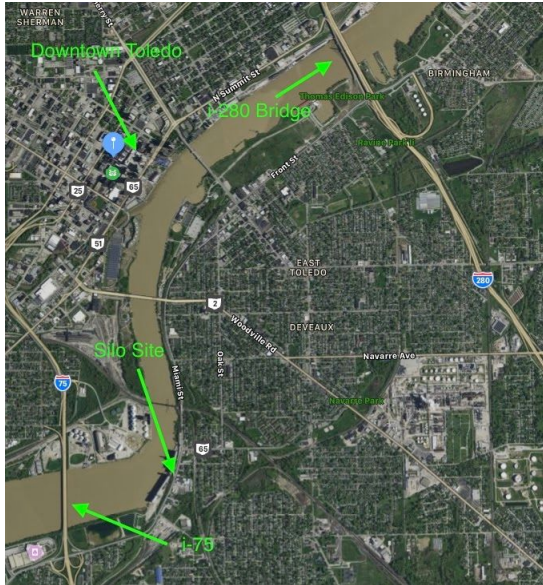
ADM's core focus on philanthropy is related to Advancing Sustainable Agriculture, Increasing Food Security and Investing in Education.

Climate:

Toledo, as with much of the Great Lakes region, has a humid continental climate characterized by four distinct seasons. Lake Erie moderates the climate somewhat, especially in late spring and fall, when air and water temperature differences are maximal. However, this effect is lessened in the winter because Lake Erie (unlike the other Great Lakes) usually freezes over.

PROJECT LOCATION





The space designated for this installation is the western facing side of the silo facility from the facility office to the south.

The silos are visible from an I-75 bridge with an estimated daily traffic of 82,365 vehicles: 77% passenger vehicles and 23% truck traffic. If this site were a billboard, it would be considered a valuable space and key location.

Specs of Grain Elevators – “Canvas” surface of one of the big 3 at the northern end = 24’ w x 135’h o ’76’ circumference (roughly 24’ diameter facing the river would be artistic surface) x 135’ height.

The length of the blue arrows indicates a

Maintenance: Spalling Repairs are done every 10-15 yrs. with spot maintenance in between by Genoa Industrial Restoration.

CALL FOR ARTIST QUALIFICATIONS:

- A simple statement of interest indicating your qualifications, vision and approach for the project is required for each submission, along with the following details:
- Visual support materials of previous work – links to gallery, websites, graphic files
- Annotated image list to accompany any submitted images
- Include supplemental information such as qualifications, link to portfolio, vision, timeline for completion, and approximate dimensions of the proposed mural. *All components must be in digital format.*
- The proposed project budget should include the artist(s) fee, supplies, travel-related expenses, and other associated costs.
- Budgets and maintenance plans of past projects.
- Supporting materials, including images and reviews of previously completed similar works in scope and scale, are required.
- Examples should describe size, materials, cost, and location of other public works.
- References for earlier projects are encouraged
- Once all the RFQ submissions have been reviewed the project is narrowed down to 3-5 artists qualified to do the project and whose vision aligns.
- A stipend will be given to artists to cover a site visit, airfare, lodgings and expenses.

The submission deadline is June 15th 2020.

Policies

Artists will retain the ownership of design ideas submitted with this application until a selection has been made and contract signed between the artist and ADM.

At the time a contract is awarded, the ownership of the design and the artwork produced, in this case the art mural project, will become the property of ADM.

Community members will be invited to discuss and give their opinions on the design which best fits Toledo and ADM. The final selections will be made by the Steering Committee and ADM.

Financial compensation and insurance for completion of the mural will be made in accordance with the agreed upon contract between the artist(s) the Steering Committee and ADM.

A complete RFQ response must include the following:

- Artist application form
- Project description (1 page)
- Images of previous work
- High-level budget/scope of work for installation

As an applicant for the opportunity to complete this art project for the Glass City River Wall, I certify that all works submitted as my work are the product of my creation and no other. I further certify that all statements made in this application are true to the best of my knowledge. I understand that the Glass City River Wall may make duplicates of my images and application materials for the purpose of the consideration of my application, and for promotional materials concerning the project.

I understand that any liability for loss or damage to my application or images is not the responsibility of the Glass City River Wall or ADM.

Submit your interest via the RFQ form at: <https://www.glasscityriverwall.org/>

Send questions and supplemental files via email to brandy3000@gmail.com. Contact our steering committee at 419-787-9112.