

# ORANGE LINING ART STAMPING PROCEDURE AND STANDARDS

## Stamping Procedure

1. Place concrete (screed, float, strike joints, edge, trowel).
2. Register area to be stamped.
3. To eliminate aggregate from area to be stamped, first lightly tamp area, then float. Then position the stamp holder/stamps in the area to be stamped and depress into concrete.
4. Remove stamp holder and trowel over the stamped area to regain a smooth surface.
5. Place stamp holder and stamps on wet concrete again and depress into the concrete with sharp blows using a rubber mallet, not using body weight. Remove stamp holder/stamps.
6. Leave stamped impression to set-up for a significant period of time, depending on weather, prior to brooming the entire panel (in one successful case, the stamping was allowed to set-up for close to 4 hours with an overcast sky before brooming).



PBOT accepted standard for stampings. Located on Old Water Avenue, near the streetcar platform east of OMSI.

## Portland City Standards

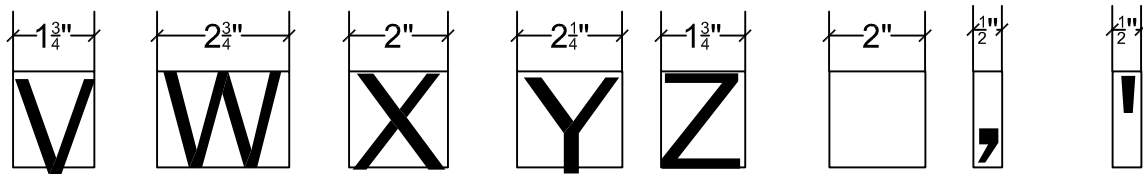
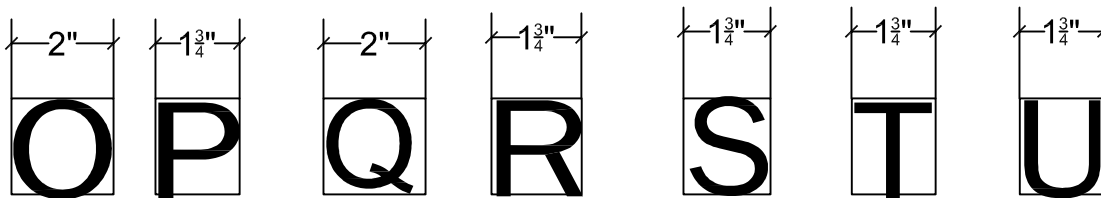
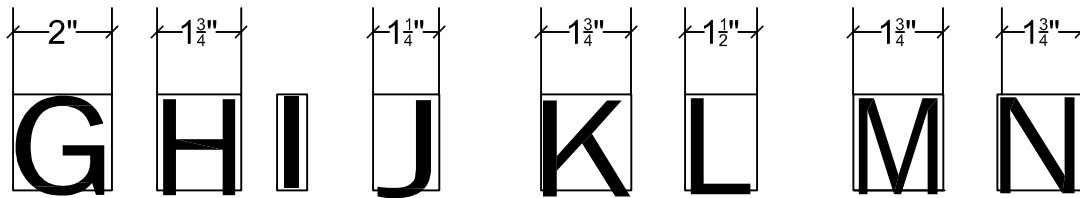
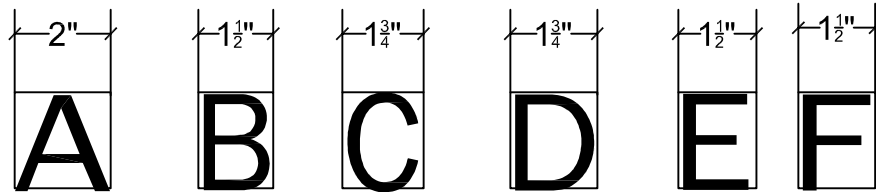
Below are the standards required by Portland's Department of Transportation (PBOT) for art stamping acceptance.

- a) The cross slope of the sidewalk should not be affected by the stamped letters. The cross slope should remain consistent across the art stamping and should match the general elevation and cross slope of the sidewalk beyond the art stamping. When placing a level across lines of text, the level shouldn't "rock" in any significant way. If it rocks, this indicates that some of the surface has been forced out of plane by stamping and that trough has been created. Any troughing created by a line of text is unacceptable, regardless of its location in the sidewalk zone.
- b) For text stamped anywhere in the eight-foot pedestrian through zone, the plane surface of the letter itself must be a depth of  $\frac{1}{4}$  inch or less than the surrounding concrete. If the depth is  $\frac{1}{4}$  inch or greater, it will not be accepted.
- c) For text stamped in the furnishing zone, the allowable depression made by a letter can be greater than  $\frac{1}{4}$  inch but must be less than  $\frac{1}{2}$  inch maximum. If the plane surface of the letter is depressed  $\frac{1}{2}$  inch or greater, then it will not be accepted.
- d) Special attention needs to be paid to the amount of depression created when stamping the letters A, B, C, D, G, O, P, Q, and R. Field observations indicated that the "white space" created within these letters was sometimes depressed to an unacceptable level, which subsequently created a low spot of about an inch diameter within the letter itself. This size of horizontal depression within a letter will not be accepted.
- e) Cracking of the sidewalk around any stamped letter is unacceptable.

## ORANGE LINING STAMP SETS

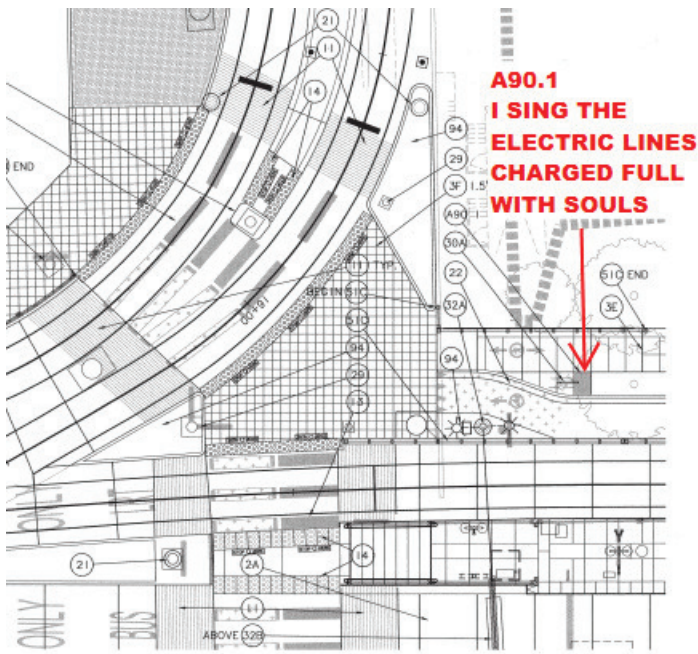
**Each Set Contains 44 units**

A-Z	26
Duplicates	11 (A,E,I,L,M,N,O,P,R,S,T)
Apostrophe	1
Comma	1
Blanks	5
	<hr/> 44



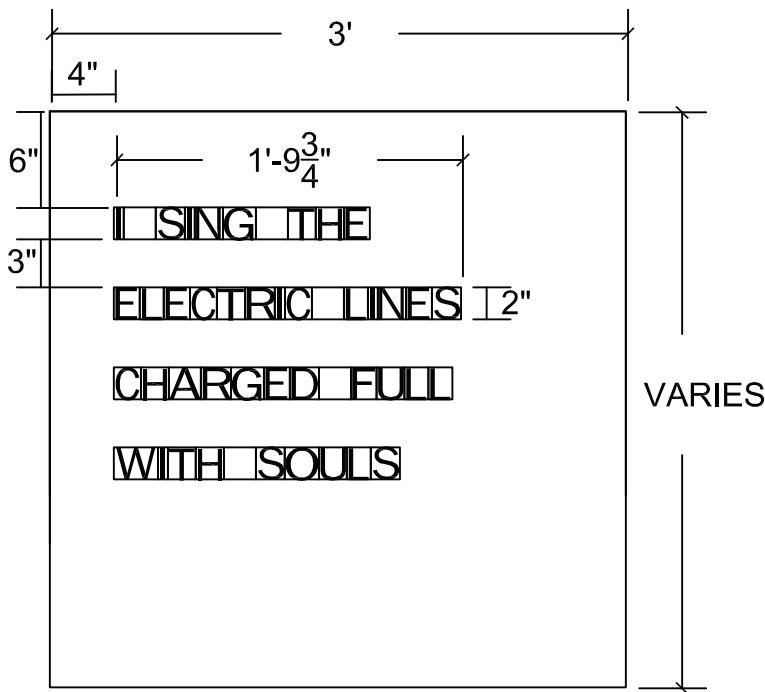
**GENERAL NOTES:**  
SEE IFC SHEET  
A15E-303  
FOR LOCATION

LINES WILL BE  
READ WHILE FACING  
THE LIGHT RAIL LINE



**TEXT ORIENTATION IN THE FIELD**  
ARROWS POINT IN THE DIRECTION PEOPLE FACE WHILE READING TEXT

- KEEP 4" MARGIN ON LEFT
- KEEP 6" MARGIN FROM TOP
- SPACING BETWEEN LINES IS 3", FROM LETTERS TO LETTERS
- REVERSED ALUMINIUM LETTER STAMPS ARE 2" HIGH
- USE BLANK ALUMINIUM STAMPS AS SPACERS BETWEEN WORDS



**TEXT SETTING DETAIL**

1" = 1'-0"

**ORANGE LINING**  
PMLR PUBLIC ART  
TRIMET  
PORTLAND, OREGON

**BUSTER SIMPSON**  
901 Yakima Ave S.  
Seattle, WA 98144  
buster@bustersimpson.net  
206.328.6212 Tel & Fax

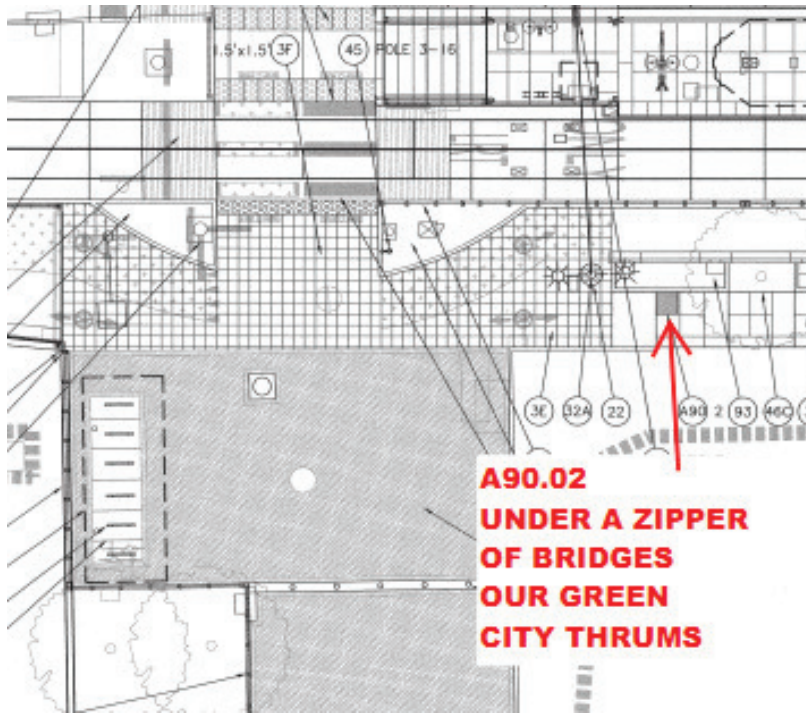
**PEG BUTLER**  
Portland, OR  
503.545.0693  
butlerpeg@gmail.com

DATE: AUGUST15, 2012  
DESIGNER: SIMPSON/BUTLER  
DRAWN BY: PEG BUTLER

CONSTRUCTION DETAILS

**EAST SIDE NORTH**  
**ART STAMPING DETAILS**

**STAMPING**  
**A90.01**



## GENERAL NOTES:

SEE IFC SHEET  
A15E-304  
FOR LOCATION

LINES WILL BE  
READ WHILE FACING  
THE LIGHT RAIL LINE

## TEXT ORIENTATION IN THE FIELD

ARROWS POINT IN THE DIRECTION PEOPLE FACE WHILE READING TEXT

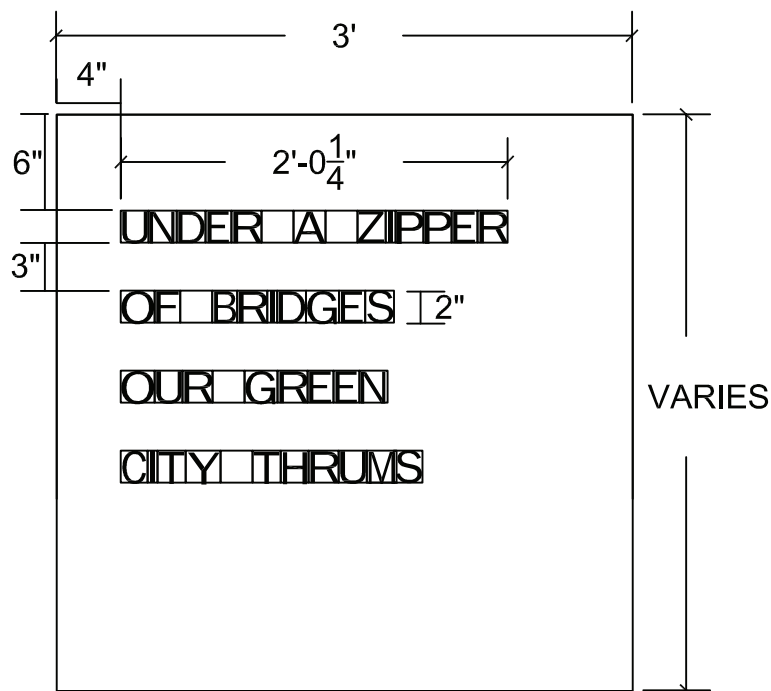
KEEP 4" MARGIN ON LEFT

KEEP 6" MARGIN FROM TOP

SPACING BETWEEN LINES  
IS 3", FROM LETTERS TO  
LETTERS

REVERSED ALUMINIUM  
LETTER STAMPS ARE 2"  
HIGH

USE BLANK ALUMINUM  
STAMPS AS SPACERS  
BETWEEN WORDS



## TEXT SETTING DETAIL

1" = 1'-0"

**ORANGE LINING**  
PMLR PUBLIC ART  
TRIMET  
PORTLAND, OREGON

**BUSTER SIMPSON**  
901 Yakima Ave S.  
Seattle, WA 98144  
buster@bustersimpson.net  
206.328.6212 Tel & Fax

PEG BUTLER  
Portland, OR  
503.545.0693  
butlerpeg@gmail.com

DATE: AUGUST 15, 2012

DESIGNER: SIMPSON/BUTLER

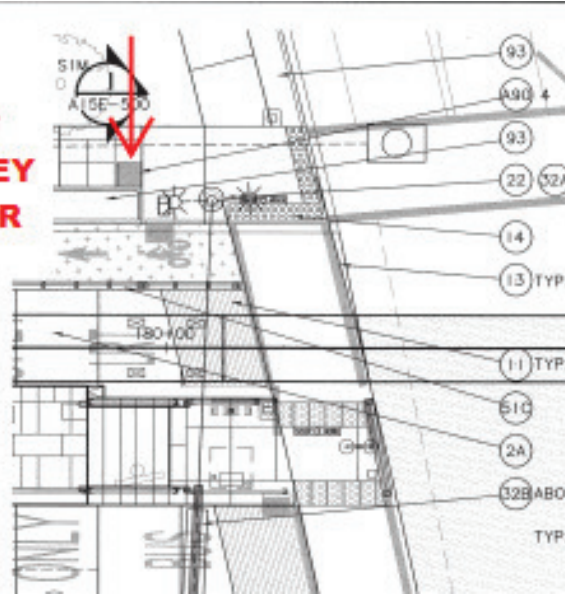
DRAWN BY: PEG BUTLER

CONSTRUCTION DETAILS

**EAST: PORTLAND  
ART STAMPING DETAILS**

**STAMPING  
A90.02**

**A90.04  
ATOP AN  
OPULENCE OF  
STICKS OSPREY  
SPY THE RIVER**



### TEXT ORIENTATION IN THE FIELD

ARROWS POINT IN THE DIRECTION PEOPLE FACE WHILE READING TEXT

### GENERAL NOTES:

SEE IFC SHEET  
A15E-305  
FOR LOCATION

LINES WILL BE  
READ WHILE FACING  
THE LIGHT RAIL LINE

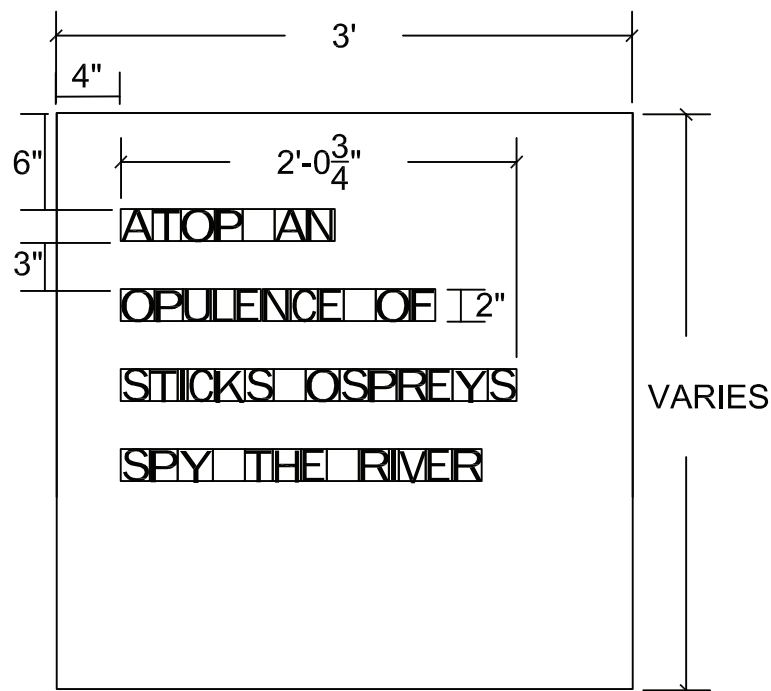
KEEP 4" MARGIN ON LEFT

KEEP 6" MARGIN FROM TOP

SPACING BETWEEN LINES  
IS 3", FROM LETTERS TO  
LETTERS

REVERSED ALUMINUM  
LETTER STAMPS ARE 2"  
HIGH

USE BLANK ALUMINUM  
STAMPS AS SPACERS  
BETWEEN WORDS



### TEXT SETTING DETAIL

1" = 1'-0"

**ORANGE LINING**  
PMLR PUBLIC ART  
TRIMET  
PORTLAND, OREGON

**BUSTER SIMPSON**  
901 Yakima Ave S.  
Seattle, WA 98144  
buster@bustersimpson.net  
206.328.6212 Tel & Fax

**PEG BUTLER**  
Portland, OR  
503.545.0693  
butlerpeg@gmail.com

DATE: AUGUST 15, 2012

DESIGNER: SIMPSON/BUTLER

DRAWN BY: PEG BUTLER

CONSTRUCTION DETAILS

**EAST: PORTLAND  
ART STAMPING DETAILS**

**STAMPING  
A90.04**