

8/8/2023

Recommendations for Pemberton Mural to be painted on brick substrate:

1. After the wall is power washed and dry, prepare the wall with two coats of Sherwin Williams Loxon Masonry Primer applied 24 hours apart. (The Primer can be applied to damp but not wet surfaces). The mural should be started within two weeks after application of the primer. See Spec. Sheet below for additional application recommendations.
 - a. Can be applied by sprayer or roller.
 - i. Minimum temp 40F.
 - ii. Reducer: No reduction necessary
 - iii. Airless Spray: Pressure 2000-2700 p.s.i.
 - iv. Tip .19 inch
 - v. Brush: nylon-polyester
 - vi. Roller Cover: ½ to 1 1/2-inch nap synthetic cover
2. Paint Mural with Golden Water-Based Acrylic Paint or Nova Color Artist Acrylic Paint within 2 weeks of application of Primer.
 - a. Paint the mural using Golden water-based acrylic paint (*Golden MURAL paints available in 128oz (1 gal.) cans.*) *Use colors that are recommended for exterior use:*
 - i. Golden Mural Paints
https://education.goldenpaints.com/technicalinfo_msavar
 - ii. Nova Color Paints
https://cdn.shopify.com/s/files/1/0551/1125/4191/files/How_to_Paint_a_Mural_with_Acrylic_Paint_08-2013_8a9f9186-5bef-46b1-afc1-0bf8ab582911.pdf?v=1661895562
3. After drying, apply an isolating coat of *MuralShield*.
 - a. Application of MuralShield (**Do not** apply by brush or roller - See Spec. Sheet below for further details.)
 - i. Apply by airless spray gun, gravity feed or Siphon HVLP, or Acetone-rated pump sprayer.
 - ii. Step 1 Allow a newly painted artwork to thoroughly cure before applying MURALSHIELD.
 - iii. Step 2 Apply a first coat, lightly misted (fog coat), to ensure initial wall adhesion.
 - iv. Step 3 Apply two to three generous coats of MURALSHIELD, allowing at least 10 minutes of drying time between coats. Make sure to overlap your passes to ensure a thorough coating.
4. After MuralShield is dry, apply of World's Best Graffiti Coating.
 - a. Application of World's Best Graffiti Coating (See Spec. Sheet below for further details.)
 - i. Allow final coat of MURALSHIELD to dry thoroughly for at least 20 minutes before applying WORLD'S BEST GRAFFITI COATING (WBGC). Apply at least two coats of WBGC (or more if the artwork is highly susceptible to vandalism) using a clean HVLP sprayer, tight knit roller, or brush. Use a bristle brush to remove any beading.
5. For graffiti removal see spec sheet below. Contact a paintings conservator. For fresh MuralShield and World's Best Graffiti Coatings do not use the Sensitive Surface Remover. Start with warm water. If solvent cleaning is necessary use the Heritage Graffiti Remover, and wet surface prior to using the graffiti remover. Always test a small area. After graffiti is removed, reapply the World's Best Graffiti Coating.

Loxon®

Concrete and Masonry Primer-Sealer

US LX02W0050, Canada LX02WQ050 White



**SHERWIN
WILLIAMS.**

CHARACTERISTICS

Loxon Concrete & Masonry Primer-Sealer is an acrylic coating specifically engineered for interior and exterior, above grade, masonry surfaces requiring a high-performance primer. It is highly alkali and efflorescence resistant and can be applied to a surface with a pH of 6 to 13.

Loxon Concrete and Masonry Primer-Sealer: Seals and adheres to concrete, brick, stucco and plaster.

Conditions porous masonry surfaces.

Use on above grade masonry surfaces for a long-lasting finish.

Apply to masonry and concrete surfaces that are at least 7 days old.

Prevents harm to subsequent coatings by alkalis in the substrate.

For use on these surfaces:

Concrete, Concrete Block, Brick, Stucco, EIFS Fiber Cement Siding, Plaster, Mortar, Exterior Wall Cladding, Tilt-Up/Pre-Cast Concrete

Finish: 0-10 units @ 85°
Color: White

Coverage:
Wet mils: 5.3-8.0
Dry mils: 2.1-3.2
Coverage: 200-320 sq. ft. per gallon
Coverage on porous & rough stucco 80 square feet per gallon.

Coverage (thin-mil primer application to new construction tilt-up/precast concrete):
Wet mils: 2.7-4.0
Dry mils: 1.1-1.8
Coverage: 400-800 sq. ft. per gallon

Drying Schedule 77°F @ 50% RH:
To touch 4 hours
To recoat 24 hours

Air and surface temperatures must not drop below 40°F for 48 hours after application.

Drying and recoat times are temperature, humidity, and film thickness dependent.

Tinting with CCE only:

For best topcoat color development, use the recommended "P"-shade primer. If desired, up to 4 oz. per gallon of ColorCast Ecotoners can be used to approximate the topcoat color. Check color before use.

Extra White LX02W0050
V.O.C. (less exempt solvents):
less than 50 grams per litre; 0.42 lbs. per gallon
As per 40 CFR 59.406

Volume Solids: 40 ±2%
Weight Solids: 55 ±2%
Weight per Gallon: 10.92 lbs
Flash Point: N.A.
Vehicle Type: Acrylic
Shelf Life: 36 months, unopened

8/2022

COMPLIANCE

As of 08/15/2022, Complies with:

OTC	Yes
OTC Phase II	Yes
S.C.A.Q.M.D.	Yes
CARB	Yes
CARB SCM 2007	Yes
CARB SCM 2020	Yes
Canada	Yes
LEED® v4 & v4.1 Emissions	Yes
LEED® v4 & v4.1 V.O.C.	Yes
EPD-NSF® Certified	Yes
MIR-Product Lens Certified	Yes
MPI®	Yes

APPLICATION

Temperature:
minimum 40°F
The following is a guide. Changes in pressures and tip sizes may be needed for proper spray characteristics. Always purge spray equipment before use with listed reducer. Any reduction must be compatible with the existing environmental and application conditions.

Reducer: No reduction necessary
Airless Spray:
Pressure 2000-2700 p.s.i.
Tip .19 inch
Brush: nylon-polyester
Roller Cover: ½ to 1^{1/2} inch nap synthetic cover

Spray and back roll on porous & rough stucco to achieve required film build and a pin-hole free surface.

For porous block, a coat of Loxon Acrylic Block Surfacer is required to achieve a pinhole free surface.

Apply at temperatures above 40°F. When the air temperature is at 40°F, substrates may be colder; prior to painting, check to be sure the air, surface, and material temperature are above 40°F and at least 5°F above the dew point. Avoid using if rain or snow is expected within 4-8 hours.

Do not apply at air or surface temperatures below 40°F or when air or surface temperatures may drop below 40°F within 48 hours.

For best performance results, avoid painting in direct sun or painting substrates with elevated surface temperatures.

Do not reduce.

May be applied to damp but not to wet surfaces.

www.sherwin-williams.com

APPLICATION TIPS

Apply paint at the recommended film thickness and spreading rate as indicated on the page. Application of coating below minimum recommended spreading rate may adversely affect the coating systems performance.

When spot priming on some surfaces, a non-uniform appearance of the final coat may result, due to differences in holdout between primed and unprimed areas. To avoid this, prime the entire surface rather than spot priming.

For optimal performance, this primer-sealer must be topcoated with a latex, alkyd-oil, water-based epoxy, or solvent based epoxy coating on architectural applications.

For exterior use, this primer-sealer must be topcoated within 14 days to prevent degradation due to weathering.

RECOMMENDED SYSTEMS

Concrete, Masonry, Cement:

1 coat Loxon Concrete & Masonry Primer
2 coats Appropriate Topcoat

Stucco, Fiber Cement Siding, EIFS:

1 coat Loxon Concrete & Masonry Primer
2 coats Appropriate Topcoat

Recommended Architectural Topcoats:

A-100 Exterior Latex
Duration Exterior & Duration Home Interior
Emerald Exterior & Interior
Loxon Masonry Coatings
SuperPaint Exterior & Interior
ProClassic Interior
ProMar Interior

Recommended Industrial Topcoats:

Industrial Enamels
Pro Industrial Series
Steel Master 9500 Silicone Alkyd
Water Based Catalyzed Epoxy

Industrial finishes have been tested for architectural applications only. Loxon Concrete and Masonry Primer has not been tested in environments subject to chemical attack. Any recommendations for use in such areas must follow a thorough evaluation of the effects of the environment on the Loxon Concrete and Masonry Primer and topcoat system.

continued on back

Loxon[®]

Concrete and Masonry Primer-Sealer

SURFACE PREPARATION

WARNING! If you scrape, sand or remove old paint, you may release lead dust. LEAD IS TOXIC. EXPOSURE TO LEAD DUST CAN CAUSE SERIOUS ILLNESS, SUCH AS BRAIN DAMAGE, ESPECIALLY IN CHILDREN. PREGNANT WOMEN SHOULD ALSO AVOID EXPOSURE. Wear a NIOSH-approved respirator to control lead exposure. Clean up carefully with a HEPA vacuum and a wet mop. Before you start, find out how to protect yourself and your family by contacting: US - National Lead Information Hotline at 1-800-424-LEAD or log on to www.epa.gov/lead; Canada - your local health authority.

Remove all surface contamination by washing with an appropriate cleaner, rinse thoroughly and allow to dry. Existing peeled or checked paint should be scraped and sanded to a sound surface. Glossy surfaces should be sanded dull. Stains from water, smoke, ink, pencil, grease, etc. should be sealed with the appropriate primer-sealer. Recognize that any surface preparation short of total removal of the old coating may compromise the service length of the system.

Masonry, Concrete, Stucco:

All new surfaces must cure for at least 7 days. Remove all form release and curing agents. Pressure clean to remove all dirt, dust, grease, oil, loose particles, laitance, foreign material, peeling and defective coatings, chalks, etc. Allow the surface to dry before proceeding. Repair cracks, voids, and other holes with an appropriate patching compound or sealant.

Concrete and mortar must be cured at least 7 days at 75°F. Moisture content must be 15% or lower. On tilt-up and poured-in-place concrete, commercial detergents and sandblasting may be necessary to remove sealers, release compounds, and to provide an anchor pattern. Fill bugholes, air pockets and other voids with an acrylic elastomeric patch or sealant.

Caulking:

Fill gaps between walls, ceilings, crown moldings, and other trim with the appropriate caulk after priming the surface

SURFACE PREPARATION

Mildew:

Prior to attempting to remove mildew, it is always recommended to test any cleaner on a small, inconspicuous area prior to use. Bleach and bleaching type cleaners may damage or discolor existing paint films. Bleach alternative cleaning solutions may be advised.

Mildew may be removed before painting by washing with a solution of 1 part liquid bleach and 3 parts clean water. Apply the solution and scrub the mildewed area. Allow the solution to remain on the surface for 10 minutes. Rinse thoroughly with clean water and allow the surface to dry before painting. Wear protective eyewear, waterproof gloves, and protective clothing. Quickly wash off any of the mixture that comes in contact with your skin. Do not add detergents or ammonia to the bleach-water solution.

PHYSICAL PROPERTIES

Do not paint on wet surfaces.

LX02W0050

Water Vapor Permeance (US):

Method: ASTM D1653 (grains/(hr ft² in Hg)

Result: 25.79 perms

Flexibility:

Method: ASTM D522

Result: method B, 180° bend, 1/8 inch mandrel Pass

Alkali Resistance:

Method: ASTM D1308

Result: Pass

Mildew Resistance:

Method: ASTM D3273/D3274

Result: Pass

Efflorescence:

Method: ASTM D7072-04

Result: Pass (None)

Wind-Driven Rain Test:

Method: ASTM D6904-03

Result: Pass

SAFETY PRECAUTIONS

For interior or exterior use.

Protect from freezing.

Do not apply at temperatures below 40°F. Air and surface temperatures must not drop below 40°F for 48 hours after application.

Before using, carefully read **CAUTIONS** on label.

ZINC Use only with adequate ventilation. To avoid overexposure, open windows and doors or use other means to ensure fresh air entry during application and drying. If you experience eye watering, headaches, or dizziness, increase fresh air, or wear respiratory protection (NIOSH approved) or leave the area. Avoid contact with eyes and skin. Wash hands after using. Keep container closed when not in use. Do not transfer contents to other containers for storage. **FIRST AID:** In case of eye contact, flush thoroughly with large amounts of water. Get medical attention if irritation persists. If swallowed, call Poison Control Center, hospital emergency room, or physician immediately. **WARNING:** This product contains chemicals known to the State of California to cause cancer and birth defects or other reproductive harm. **DO NOT TAKE INTERNALLY. KEEP OUT OF THE REACH OF CHILDREN.**

HOTW 08/15/2022 LX02W0050 46 00
FRC, SP

CLEANUP INFORMATION

Clean spills, splatters, hands and tools immediately after use with soap and warm clean water. After cleaning, flush spray equipment with compliant cleanup solvent to prevent rusting of the equipment. Follow manufacturer's safety recommendations when using solvents.



Artex Manufacturing Company

5894 Blackwelder St. Culver City CA 90232

310 204-6900 FAX 310 838-2094

Open Monday-Friday 8:30-4:30 Pacific Time

<http://www.novacolorpaint.com/> Email: sales@novacolorpaint.com/

Tips for Painting an Exterior Mural Using Acrylic Paint

Planning how to paint a mural is as important as painting a mural. Proper research and planning will make your mural last as long as possible.

The outdoors can be a rough place for artwork. Nova Color is a tough, durable product, but no outdoor paint lasts forever. The site location, wall preparation, color choice, and application are all very important! Don't skimp on the details.

The mural location: The main enemies of a mural are sunlight and moisture. North and East facing murals will last longer than West or South facing murals. Murals should not be painted on retaining walls that have earth behind them as moisture can seep through and may lift off the paint or may leave mineral deposits. Avoid locations watered by sprinklers or run off from a roof as this may result in mineral deposits or stains. Acrylic paint is water-resistant but not waterproof and should not be used in standing water. Check your mural site carefully! If you see evidence of previous problems, be sure the causes are corrected or select another site.

Proper surface preparation: Proper surface preparation before you begin painting is the most important factor to ensure a long-lasting mural, painting or decorative finish. The surface must be clean and free from any loose or flaking paint, mold or mildew. To prepare a previously painted surface, sand or wire brush as needed. Wash with a solution of trisodium phosphate (available at paint stores), rinse well and allow to dry. Remove mold and mildew by scrubbing with bleach. If the surface was previously painted with an oil-based or shiny paint, sand thoroughly before priming. Cement, masonry or wood should be primed with one or two coats of acrylic gesso (such as Nova Color Gesso #200) or with a high quality water-based primer. Laminate board (such as MDO board) that will be installed outdoors should be primed on all sides, including the edges. Do not prime with an oil-based paint or oil-based primer unless the manufacturer specifies that it is suitable for use with water-based paints. To check adhesion, apply a test patch and allow to dry for 36 hours. Check by scraping.

The paint must be suitable for exterior use. The type of acrylic resin used in paint formulation varies depending on the intended use of the paint. Some fine arts, schoolroom, craft or interior paint may use a good quality resin, but this resin may not be suitable for outdoor use. These paints may be too soft, weak or water sensitive for use outdoors. Nova Color Artists' Acrylic Paint is made with a tough, 100% acrylic resin durable for outdoor use.

In addition to the type of resin used in the paint, the amount or percentage of resin used in the paint formula is important. As a rule, less expensive paints such as low cost house paints or craft paints have only the minimum amount of resin required to make them serviceable. House paints or craft paints are often made with a less expensive and less durable latex or vinyl-latex resin. House paints are designed to last 5-10 years before recoating. With age these paints may become thin, tend to wash off or appear chalky. If you wish to economize by using house paint, use the best quality paint containing 100% acrylic resin.

Adding too much water to the paint can affect adhesion and color permanence, and can shorten the life of your mural. In general, when adding water do not add more than 10% water to Nova Color or 5% to house paint. Use #235 Novaplex to thin paint and keep film strength. If you have thinned the paint to use a paint sprayer, be sure you have applied a sufficiently thick paint film. Sealing with a topcoat will help if there are weak layers beneath.

All materials used in the mural should be researched before they are used. Materials designed for the construction industry or craft use may not be suitable.

Ideally, painting should be done in a temperature range of 65-85 degrees F. Avoid painting in misty or rainy weather. Painting should not be done late in the day when it may become misty or freezing before the paint dries. Do not paint on a frozen wall. Do not paint in hot, direct sunlight or on a heated wall, as paint may dry too fast. If you paint during poor weather conditions you may have adhesion problems in the future!

To minimize color fading due to sunlight you must be alert to the lightfastness rating of the pigment used in the paint. Some pigments fade more readily than others. The American Society for Testing and Materials (ASTM) Standard D5098 rates the lightfastness of pigments. Lightfastness I is the highest rating.

Within the Lightfastness 1 rating some colors are more durable than others. The most durable lightfast colors for exterior conditions are:

#100 Burnt Sienna	#117 Raw Umber	#174 Neutral Gray 5
#101 Burnt Umber	#117D Raw Umber Dark	#175 Trans Yellow Iron Oxide
#104 Chromium Oxide Green	#118 Titanium White	#176 Indanthrone Blue
#105 Cobalt Blue	#119 Venetian Red (red oxide)	#177 Phthalo Green Yellow Shade
#108 Iron Oxide (Mars) Black	#121 Yellow Ochre	#180 Iridescent Base & Glaze
#109 Carbon Black	#128 Raw Sienna	#181 Quinacridone Violet
#110 Organic Pyrrole Orange	#133 Bismuth Yellow	#183 Bone/Ivory Black
#115 Phthalo Blue	#134 Raw Titanium Matte	#184 Deep Green
#115D Phthalo Blue Deep	#141 Mars Violet	#187 Pyrrole Red
#116 Phthalo Green	#149 Transparent Red Iron Oxide	

These colors are not quite as highly rated as those listed above but can be good exterior choices:

#114 Alizarin Crimson Hue	#139 Super Pearl White	#148 Super Pearl Gold
#129 Quinacridone Red	#140 Payne's Gray	#178 Arylide Yellow PY194
#137 Silver	#147 Quinacridone Magenta	#185 Sun Gold

Lightfastness ratings are according to the American Society for Testing and Materials D5098. I=Excellent II=Very Good III=Does not conform to ASTM D5098.

Ratings are based on the color at full strength. Most colors will be less lightfast when used as a tint (mixed with white, water or other colors) or if used as a glaze (mixed with clear mediums).

Colors can fade or react to conditions other than sunlight. Weathering and other environmental conditions such as moisture, acid rain, industrial gases, salt air, and wind can affect color permanence.

Cadmium colors (rated Lightfastness 1), especially cadmium yellows, are sensitive to damp conditions and are not recommended for exterior use. The addition of titanium dioxide (white paint) reduces the durability of cadmium pigments in outdoor environments. Cadmium oranges and reds are more light stable than cadmium yellows, but all cadmium pigments will degrade outdoors if moisture is allowed to penetrate through to the pigment. A clear coat can be used to protect the surface. Be sure that the edges and reverse side are sealed to prevent moisture penetration from those areas. In some situations, cadmium colors have been used successfully outdoors.

New stucco or plaster should be thoroughly cured before painting. Alkaline conditions can cause fading in some colors such as Ultramarine Blue (rated Lightfastness 1).

If you do not see your favorite lightfastness 1 color on this list it does not mean that color is a bad choice for your work. The mural environment and how the artist mixes and applies the paint make a big difference. Nova Color customers have had exterior success with all the lightfastness 1 colors and even some lightfastness 2 colors! We want you to have the best options and the best information.

A clear topcoat designed for exterior use such as Nova Color #216 Exterior Varnish (satin) or Nova Color #206 Gloss Medium & Varnish (shiny) will help protect against dampness and add an extra layer of protection against wear and tear. The topcoat should be applied with the same care as the mural painting. A sloppy application of a topcoat can cause cloudiness. Apply the topcoat in thin layers, being careful not to overwork the topcoat while it is drying. Do not allow excess topcoat to collect in drips or crevices. Quickly brush out any drips or puddles before they dry to avoid a cloudy appearance. Using a paint roller is not recommended. We recommend making a test patch before coating the entire mural.

Due to the variability of situations and artistic techniques, we make no express or implied warranties as to the suitability or fitness of Nova Color for a particular purpose or situation.

About Nova Color Artists' Acrylic Paint: We have been making Nova Color Artists Acrylic Paint since the 1960's. We use a tough, durable, 100% acrylic resin suitable for use outdoors. No additives are needed to make it suitable for exterior use. Nova Color is sold factory-direct to the muralist and is available in pints, quarts, gallons and 5-gallon pails. Nova Color is shipped throughout the USA and Canada.

For a quote including shipping cost please call, email, fax or use our online order form
Nova Color 5894 Blackwelder Street, Culver City CA 90232 Telephone 310 204-6900 <http://www.novacolorpaint.com/>
Page 2 of 2 (03-2013)

Golden Paintworks

A division of Golden Artist Colors, Inc.

188 Bell Road

New Berlin, NY 13411-3616 USA

607-847-6154

800-959-6543

E-Mail: paintworks@goldenpaints.com

Web Page: www.goldenpaintworks.com



Recommended Colors for Exterior Murals

All colors in the Golden Paintworks Mural Paints line have been formulated and extensively tested for maximum exterior durability and are recommended for use on both interior and exterior murals.

Golden Paintworks Mural Paint Colors:

CPWSM26	MURAL Light Yellow
CPWSM22	MURAL Bismuth Vanadate Yellow
CPWSM07	MURAL Hansa Yellow Opaque
CPWSM27	MURAL Medium Yellow
CPWSM28	MURAL Yellow Orange
CPWSM17	MURAL Pyrrole Orange
CPWSM23	MURAL Pyrrole Red Lt
CPWSM10	MURAL Pyrrole Red
CPWSM24	MURAL Pyrrole Red Dark
CPWSM35	MURAL Crimson
CPWSM34	MURAL Quinacridone Violet
CPWSM38	MURAL Purple
CPWSM36	MURAL Light Blue GS
CPWSM16	MURAL Daylight Blue
CPWSM37	MURAL Royal Blue
CPWSM08	MURAL Phthalo Blue GS
CPWSM09	MURAL Phthalo Green BS
CPWSM32	MURAL Hookers Green Hue
CPWSM25	MURAL Sap Green Hue
CPWSM04	MURAL Chrome Oxide Green
CPWSM29	MURAL Medium Green
CPWSM30	MURAL Yellow Green
CPWSM31	MURAL Light Yellow Green
CPWSM18	MURAL Yellow Oxide
CPWSM12	MURAL Raw Sienna
CPWSM01	MURAL Burnt Sienna
CPWSM02	MURAL Burnt Umber
CPWSM13	MURAL Raw Umber
CPWSM03	MURAL Carbon Black
CPWSM39	MURAL Payne's Gray
CPWSM14	MURAL Titanium White
CPWSM64	MURAL Iridescent Bronze
CPWSM63	MURAL Iridescent Copper
CPWSM62	MURAL Iridescent Gold
CPWSM61	MURAL Iridescent Silver
CPWSM60	MURAL Iridescent Pearl

The following three Mural Paint colors were considered important for the palette, but are recommended for Interior Murals Only:

CPWSM11	MURAL Quinacridone Magenta
CPWSM06	MURAL Dioxazine Purple
CPWSM15	MURAL Ultramarine Blue

Optionally, a limited palette of GOLDEN branded acrylic products, such as Heavy Body or Fluid Acrylics, may be used for exterior murals. The following is a list of the most stable pigment choices for use on an exterior mural. *Application of isolation coats and a suitable varnish or topcoat is highly recommended.*

The most stable GOLDEN Acrylic colors for exterior use:

- Anthraquinone Blue
- Bismuth Vanadate Yellow
- Bone Black
- Burnt Sienna
- Burnt Umber Light
- Burnt Umber
- Carbon Black
- Chromium Oxide Green
- Chromium Oxide Green Dark
- Cobalt Green
- Cobalt Turquoise
- Graphite Gray
- Mars Black
- Mars Yellow
- Neutral Grays
- Phthalo Blue GS
- Phthalo Blue RS
- Phthalo Green BS
- Phthalo Green YS
- Primary Cyan
- Pyrrole Orange
- Pyrrole Red
- Pyrrole Red Dark
- Pyrrole Red Light
- Raw Sienna
- Raw Umber
- Red Oxide
- Teal
- Terre Verte Hue
- Titan Buff
- Titanate Yellow
- Transparent Brown Iron Oxide
- Transparent Red Iron Oxide
- Transparent Yellow Iron Oxide
- Titanium White
- Turquoise (Phthalo)
- Van Dyke Brown Hue
- Violet Oxide
- Yellow Oxide

Stable colors, but avoid thin layers or glazes for minimal color shift:

Cerulean Blue
Cerulean Blue Deep
Naples Yellow Hue
Diarylide Yellow
Hansa Yellow Opaque
Quinacridone Red

Increasing the Durability of the GOLDEN Acrylics Paint System

Although GOLDEN Acrylics are optimized for traditional easel painting, the acrylic resin is somewhat soft for mural work, and should be modified with a harder acrylic medium to maximize durability. Adding GAC 200 also reduces the pigment load of the paint mixture, making the paint more binder rich, which extends exterior lifetime. This is especially important if the artist chooses not to topcoat with a varnish. To improve the exterior durability of the paints, blend in 1 part GOLDEN GAC 200 for every 2 to 4 parts paint.

For exterior spray application, using GOLDEN Fluid Acrylics thinned with Airbrush Medium will be the most durable option. GOLDEN High Flow Acrylics can also be used, but they should be blended with GOLDEN Airbrush Transparent Extender and given a protective finish to increase durability. In spray application, the GAC 200 is not practical to use as it will thicken the paint, and interfere with sprayability. Another approach would be to topcoat the High Flow Acrylics with a sprayable isolation coat using a 2:1 mixture of GAC 500:GOLDEN Airbrush Transparent Extender.



Muralshield Preservation Solution

For the PROTECTION & CONSERVATION
of fine art acrylic murals

Product Data Sheet

Product Code: WB0130

Issued: July 12, 2023

PRODUCT DESCRIPTION

MURALSHIELD is designed for the protection and conservation of fine art acrylic murals. It offers UV protection, consolidation, and weatherproofing. MURALSHIELD will restore weathered, uncoated murals, and is recommended for the preservation of new acrylic and aerosol murals.



SPARC mural restoration, Hollywood CA

MURALSHIELD is a conservation grade flexible coating designed as a protective and isolation layer. However, it will not protect against graffiti vandalism alone. For long lasting, durable graffiti protection, WORLD'S BEST GRAFFITI COATING must be applied over MURALSHIELD.

Once a mural is preserved with MURALSHIELD, WORLD'S BEST GRAFFITI COATING is easily applied as a sacrificial barrier for graffiti protection, enabling quick removal of all types of graffiti vandalism without damage to the underlying surface.

The final outcome will be a highly maintainable, durable, vibrant mural.



MURALSHIELD being applied with HVLP sprayer



MURALSHIELD is compatible with artist-grade acrylic paints, fine art aerosols, collage-based, or digitally printed murals. Compatible substrates include building structures such as uncoated concrete, wood and signage grade panels, most exterior insulated finishing systems (EIFS) and stuccos, CMU block walls, brick walls (depending on the brick condition), painted and coated surfaces.

MURALSHIELD can also be used to prepare a concrete, CMU, stucco, painted or unpainted wall for painting. MURALSHIELD should only be used after a wall is cleaned and thoroughly dry.

Apply two coats of MURALSHIELD to a painted or unpainted surface prior to gessoing or priming.

FEATURES & BENEFITS

- Restores color to sun-damaged, uncoated murals as well as flexibility and vibrancy to weakened paint binders.
- Can be painted over indefinitely, so long as an additional coat of MURALSHIELD is applied to the newly painted section.
- Provides long lasting UV protection and weather proofing.



**FOR EXPERT TECHNICAL ADVICE ON YOUR JOB,
PLEASE CALL 1-818-247-2555 OR
EMAIL SALES@GRAFFITIREMOVALINC.COM**



Urban Restoration Group US Inc. (URG US INC) maintains Safety Data Sheets (SDS) on all of its products. The SDS contain information that you will need to protect yourself, your employees and customers against health or safety hazards associated with our products. URG US INC requires that you obtain a copy of the respective SDS prior to using or transporting our products. The information in this Product Data Sheet is based on data that we believe to be reliable and is offered in good faith, but without guarantee, and subject to the terms and conditions set forth in URG US INC's Product Data Sheet and any additional documentation provided by URG US INC's, as ultimately the conditions and methods of the use of URG US INC's products are beyond URG US INC's control.

URBAN RESTORATION GROUP US INC MAIL: 1146 N Central Ave. #531, Glendale CA 91202 USA. WAREHOUSE: 5439 San Fernando Rd. W. Los Angeles CA 90039 USA. TEL: 1-818-247-2555. FAX: 1-818-247-2515. EMAIL: sales@graffitiremovalinc.com. WEB: www.graffitiremovalinc.com



Muralshield Preservation Solution

For the PROTECTION & CONSERVATION
of fine art acrylic murals

Page 2 of 5

Product Data Sheet

Product Code: WB0130

Issued: July 12, 2023

INSTRUCTIONS FOR USE

Use the product as supplied; do not dilute or shake before use. Do not add water to product. Do not apply product with water-wet brushes or recently washed equipment, over dew or moist surfaces, or when there is a possibility of rain or very high humidity.

MURALSHIELD should only be sprayed using an HVLP, an ACETONE RATED pump-up sprayer, or airless sprayer. It is normal best practice to mask and protect windows in a suitable manner.

HOW TO APPLY MURALSHIELD

Begin by testing MURALSHIELD on an inconspicuous section of the mural. You should see a noticeable increase in color vibrancy and luster. Allow to dry. Use adequate solvent-rated masks, protective goggles, and solvent-rated gloves.

Method of Application

Apply by airless spray gun, Gravity Feed or Siphon HVLP spray guns, or Acetone-rated pump-up Sprayer.

Using rental equipment is discouraged. Should it be used, inspect for paint contaminants in all hoses, containers, and fittings. Dry paint within spray equipment should be thoroughly removed before spraying MURALSHIELD.

Avoid applying MURALSHIELD with brushes or rollers as the coating may damage the artwork.

Step 1 Allow a newly painted artwork to thoroughly cure before applying MURALSHIELD.

Step 2 Apply a first coat, lightly misted (fog coat), to ensure initial wall adhesion.

Step 3 Apply two to three generous coats of MURALSHIELD, allowing at least 10 minutes of drying time between coats. Make sure to overlap your passes to ensure a thorough coating.

Step 4 Allow final coat to dry thoroughly for at least 20 minutes before applying WORLD'S BEST GRAFFITI COATING (WBGC). Apply at least two coats of WBGC (or more if the artwork is highly susceptible to vandalism) using a clean HVLP sprayer, tight knit roller, or brush. Use a bristle brush to remove any beading.

For additional instructions on how to apply WBGC (see WBGC Product Data Sheet).

CLEANING INSTRUCTIONS FOR SPRAYERS

After spraying MURALSHIELD, do not clean spray equipment with water. Rinse spray equipment with Acetone or paint thinners. A final rinse with water is recommended.

After spraying WORLD'S BEST GRAFFITI COATING, spray equipment can be easily rinsed with water.

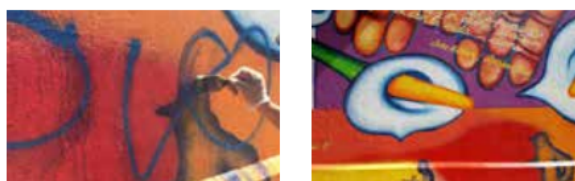
GRAFFITI REMOVAL INSTRUCTIONS

SMALL SCALE 'TAG' REMOVAL JOBS

Step 1 Apply SENSITIVE SURFACE or HERITAGE GRAFFITI REMOVER with a solvent-rated brush. Agitate the graffiti with your brush as the product is applied.

Step 2 Wipe away dissolved graffiti with a damp toweling cloth.

Step 3 Once satisfied with the results, thoroughly rinse the affected area and allow the surface to dry. Re-apply two to three coats of WORLD'S BEST GRAFFITI COATING by spray, roller, or brush.



Though cold water pressure washers will usually suffice, hot water yields the best results.

LARGE SCALE GRAFFITI REMOVAL JOBS

For large scale removals, such as bombs, heavy tagging, filled in bubble writing, buffed or painted over murals.

Step 1 Work in sections of 5-10 sq ft. Apply HERITAGE GRAFFITI REMOVER using a pump up sprayer, nylon brush or broom, and agitate.



Urban Restoration Group US Inc. (URG US INC) maintains Safety Data Sheets (SDS) on all of its products. The SDS contain information that you will need to protect yourself, your employees and customers against health or safety hazards associated with our products. URG US INC requires that you obtain a copy of the respective SDS prior to using or transporting our products. The information in this Product Data Sheet is based on data that we believe to be reliable and is offered in good faith, but without guarantee, and subject to the terms and conditions set forth in URG US INC's Product Data Sheet and any additional documentation provided by URG US INC's, as ultimately the conditions and methods of the use of URG US INC's products are beyond URG US INC's control.

URBAN RESTORATION GROUP US INC MAIL: 1146 N Central Ave. #531, Glendale CA 91202 USA. WAREHOUSE: 5439 San Fernando Rd. W, Los Angeles CA 90039 USA. TEL: 1-818-247-2555. FAX: 1-818-247-2515. EMAIL: sales@graffitiremovalinc.com. WEB: www.graffitiremovalinc.com



Muralshield Preservation Solution

For the PROTECTION & CONSERVATION
of fine art acrylic murals

Page 3 of 5

Product Data Sheet

Product Code: WB0130

Issued: July 12, 2023

LARGE SCALE GRAFFITI REMOVAL JOBS cont...

Step 2 You will see the graffiti gradually dissolve on the surface. Rinse the dissolved graffiti using a pressure washer with a 25° tip maintaining a distance of 6" - 12" away from the mural surface in order to ensure no damage to the acrylic paint layer.

Step 3 Any remaining graffiti can be spot cleaned using HERITAGE REMOVER or SENSITIVE SURFACE REMOVER and a nylon bristle brush.

Step 4 Once all graffiti is removed, rinse the entire mural clean. Allow 15-30 minutes before reapplying WORLD'S BEST GRAFFITI COATING.

Step 5 Apply two coats of WORLD'S BEST GRAFFITI COATING by spray, roller, or brush.



Cleaning graffiti after using MURALSHIELD in conjunction with WORLD'S BEST COATING.

'Hitting the Wall' Los Angeles 110 Freeway © Judy Baca



RESTORING A COATED OR UNCOATED MURAL

Step 1 Remove sacrificial or non-sacrificial coatings. Contact the original artist and collect any historical information on the mural or artwork. Follow appropriate methods for obtaining artist permission as per the Visual Artist Rights Act, 17 U.S. Code § 106A.

Follow conservation procedures and American Institute of Conservation Code of Ethics and Guidelines for Practice. Document and assess the condition of the mural for any delamination or sensitive areas.

Secure delaminating areas prior to removing any graffiti. Identify any previously used graffiti coating. If it is a sacrificial coating, follow the manufacturer's instructions for removal. If it is a non-sacrificial coating, contact the manufacturer for best removal practices.

For removal of non-sacrificial urethane or polyurethane coatings, contact the Social and Public Art Resource Center. Remove the previous graffiti coating and go on to Step 2.

Step 2 Test the condition of a mural.

Assess the condition of the mural by wiping the acrylic paint layer with a damp white cloth. A damaged binder will release a substantial amount of pigment.

If you are able to wipe off a substantial amount of color, avoid washing the mural with harsh chemicals or pressure washers. Go to Step 3.

If a little color comes off of the mural, consider using a biodegradable soap, and a low PSI pressure wash with a water temperature of 80-150°F.

Step 3 Apply MURALSHIELD.

Apply 2-3 coats of MURALSHIELD. You should see a significant color shift in damaged areas.

Step 4 In-painting.

Select an artist grade acrylic paint. We suggest using Golden Artist Colors. Proceed as per normal conservation practices.

Step 5 Reapply MURALSHIELD.

Apply 2-3 coats of MuralShield. Follow the application instructions in the section, "How to Apply MuralShield."

Step 6 Apply WORLD'S BEST COATING.

Apply 2-3 coats of WORLD'S BEST COATING. Document the final conservation results. For more information, contact the Social and Public Art Resource Center at +1-310-822-9560 (www.SPARCinLA.org).



Urban Restoration Group US Inc. (URG US INC) maintains Safety Data Sheets (SDS) on all of its products. The SDS contain information that you will need to protect yourself, your employees and customers against health or safety hazards associated with our products. URG US INC requires that you obtain a copy of the respective SDS prior to using or transporting our products. The information in this Product Data Sheet is based on data that we believe to be reliable and is offered in good faith, but without guarantee, and subject to the terms and conditions set forth in URG US INC's Product Data Sheet and any additional documentation provided by URG US INC's, as ultimately the conditions and methods of the use of URG US INC's products are beyond URG US INC's control.

URBAN RESTORATION GROUP US INC MAIL: 1146 N Central Ave. #531, Glendale CA 91202 USA. WAREHOUSE: 5439 San Fernando Rd. W, Los Angeles CA 90039 USA. TEL: 1-818-247-2555. FAX: 1-818-247-2515. EMAIL: sales@graffitiremovalinc.com. WEB: www.graffitiremovalinc.com



Muralshield Preservation Solution

For the PROTECTION & CONSERVATION
of fine art acrylic murals

Product Data Sheet

Product Code: WB0130

Issued: July 12, 2023

MODIFYING A MURAL PREVIOUSLY COATED WITH MURALSHIELD AND WORLD'S BEST COATING cont...

Step 1 For touch-ups or artwork modifications, or in-painting projects, thoroughly remove WORLD'S BEST GRAFFITI COATING (WBGC) by using HERITAGE GRAFFITI REMOVER with a cold or hot pressure washer at 120°F / 49°C - 200°F / 93°C. You will see a visible difference in the areas where WBGC has been removed.

Step 2 Test your mural by lightly scraping the surface with a blunt blade or fingernail. If you do not see a waxy residue on your tool, then you are ready to commence in-painting.

Step 3 Allow the freshly painted areas to thoroughly cure.

Step 4 Apply two to three generous coats of MURALSHIELD to the entire mural, followed by two final coats of WBGC.

PREPARING NEW WALLS

For Uncoated or Unpainted Walls

Step 1 Wash an uncoated wall using TSP (Trisodium Phosphate and / or biodegradable soap. Allow the surface to thoroughly dry.

Step 2 Apply 2-3 coats of MURALSHIELD.

Step 3 Gesso or prime the wall surface.

Step 4 (Optional) Reapply 1-2 additional coats of MURALSHIELD.

For Coated or Painted Walls

Step 1 Assess the condition of the coated or painted surface. If the coating or paint easily delaminates off of the wall, consider removing this first. If there is adequate adhesion, wash the wall using a biodegradable soap and allow the surface to thoroughly dry.

Step 2 Apply 2-3 coats of MURALSHIELD.

Step 3 Gesso or prime the wall surface.

Step 4 (Optional) Reapply 1-2 additional coats of MURALSHIELD.

CAUTION

Before commencing any large scale coating application, be sure to test thoroughly on an inconspicuous area to determine finish and compatibility with your materials.

Please be aware the use of solvent based sharpies for outlining your mural may bleed through paint after application of MuralShield. We do not recommend using sharpies for this reason.

SAFETY ISSUES

Flammable: Do not apply MURALSHIELD near any potential source of ignition. Keep away from heat and open flame. Contact with other material may cause fire. Take precautionary measures against static discharge.

Use only outdoors or in well-ventilated areas using a face mask or respirator. Avoid applying in populated areas.

Skin Contact: Remove contaminated clothing and wash affected area with plenty of water.

Eye Contact: Immediately eyes with plenty of water for 15 minutes. Seek medical attention.

Storage: Keep container in cool well-ventilated area.

Personal Protection: Wear gloves and protective goggles to avoid skin and eye contact. Utilize either work clothes or a disposable protective suit, to avoid garment damage or accidental spillage.

Use adequate solvent-rated masks or respirator. We recommend solvent or paint stripping rated masks with a cartridge based re-breather. A splash-proof guard should be used when spraying.

MATERIAL SPECIFICATIONS AND COVERAGE GUIDELINES

Approximately 300 sq ft of coverage per gallon on painted or unpainted surfaces, depending on substrate and application technique, for 2-3 coats of product. (For example, an 800 sq ft mural on a wall will require 2-3 gallons of MURALSHIELD).



Urban Restoration Group US Inc. (URG US INC) maintains Safety Data Sheets (SDS) on all of its products. The SDS contain information that you will need to protect yourself, your employees and customers against health or safety hazards associated with our products. URG US INC requires that you obtain a copy of the respective SDS prior to using or transporting our products. The information in this Product Data Sheet is based on data that we believe to be reliable and is offered in good faith, but without guarantee, and subject to the terms and conditions set forth in URG US INC's Product Data Sheet and any additional documentation provided by URG US INC's, as ultimately the conditions and methods of the use of URG US INC's products are beyond URG US INC's control.

URBAN RESTORATION GROUP US INC MAIL: 1146 N Central Ave. #531, Glendale CA 91202 USA. WAREHOUSE: 5439 San Fernando Rd. W, Los Angeles CA 90039 USA. TEL: 1-818-247-2555. FAX: 1-818-247-2515. EMAIL: sales@graffitiremovalinc.com. WEB: www.graffitiremovalinc.com



Muralshield Preservation Solution

For the PROTECTION & CONSERVATION
of fine art acrylic murals

Product Data Sheet

Product Code: WB0130

Issued: July 12, 2023

MATERIAL SPECIFICATIONS AND COVERAGE GUIDELINES cont...

Drying Period

Quick drying, allow 10-15 minutes, depending on the environmental conditions.

Appearance on Surface

Completely clear, producing a vibrant luster to glossy finish.

TEMPERATURE USAGE

Ideal temperature for external application should be between 45°F / 7°C - 95°F / 35°C. Minimum temperature is 40°F. Relative humidity must not exceed 95%.

NB: Fresh concrete has to cure for at least 28 days before protection.

TECHNICAL DATA

Supplied in 1g bottles or 5g steel containers.

Color: Clear colorless volatile liquid.

Odor: Fragrant, Mint like odor

Specific Weight: 0.79 @ 20C/4C.

PH: Not specified.

Storage: Store in a cool, dry and well-ventilated place away from any ignition source.

Shelf Life: 5 years in sealed original containers.

DOT MARKING:

UN1993, Flammable liquid, n.o.s.,(t butyl acetate, acetone),3,PGII

Refer to SDS for more details

LEGAL DISCLAIMER

Read and follow label directions and observe all safety precautions in the use of this product. Because conditions of product use are outside of our control and vary widely, the following is made in lieu of all express or implied warranties:

This product will conform to Urban Restoration Group US, Inc.'s published product specifications and be free from defects in material and manufacture on the date of purchase.

Except where prohibited by law, Urban Restoration Group US Inc., further disclaims, and shall not be liable for any incidental, special, consequential or indirect loss or damage and/or personal injuries including death arising from the use of this product or the cost of labor involved in its application or any reapplication of product that is replaced, regardless of the legal theory asserted.

SELLER MAKES NO WARRANTY, EXPRESS OR IMPLIED, CONCERNING THE USE OF THIS PRODUCT OTHER THAN INDICATED ON THE LABEL. BUYER ASSUMES ALL RISK OF USE AND/OR HANDLING OF THIS PRODUCT AND MATERIAL WHEN SUCH USE AND/OR HANDLING IS CONTRARY TO LABEL INSTRUCTIONS. NO OTHER WARRANTIES ARE MADE, EXPRESS OR IMPLIED, INCLUDING WITHOUT LIMITATION WARRANTIES AS TO MERCHANTABILITY OR FITNESS FOR A PARTICULAR PURPOSE. IN ALL EVENTS, URBAN RESTORATION GROUP US, INC'S LIABILITY SHALL BE LIMITED SOLELY TO THE REPLACEMENT OF THE PRODUCT PURCHASED.

This limited warranty may not be modified or extended by manufacturer's representatives, distributors or dealers of Urban Restoration Group US, Inc. products. This warranty gives the purchaser specific legal rights, as well as rights which may vary from state to state. Urban Restoration Group US, Inc. specifically disclaims any and all other obligations or liability to any party relative to the sale, use or application of its products.

If this product is defective upon your receipt, your exclusive remedy shall be, at Urban Restoration Group US, Inc.'s option, to replace the product or refund the purchase price of the Urban Restoration Group US, Inc. product.

CONTACT MANUFACTURER

Urban Restoration Group US Inc.
5439 San Fernando Rd. W., Los Angeles CA 90039 USA
Tel: +1-818-247-2555. Fax: +1-818-247-2515
Email: sales@graffitiremovalinc.com
Web: www.graffitiremovalinc.com



Urban Restoration Group US Inc. (URG US INC) maintains Safety Data Sheets (SDS) on all of its products. The SDS contain information that you will need to protect yourself, your employees and customers against health or safety hazards associated with our products. URG US INC requires that you obtain a copy of the respective SDS prior to using or transporting our products. The information in this Product Data Sheet is based on data that we believe to be reliable and is offered in good faith, but without guarantee, and subject to the terms and conditions set forth in URG US INC's Product Data Sheet and any additional documentation provided by URG US INC's, as ultimately the conditions and methods of the use of URG US INC's products are beyond URG US INC's control.

URBAN RESTORATION GROUP US INC MAIL: 1146 N Central Ave. #531, Glendale CA 91202 USA. WAREHOUSE: 5439 San Fernando Rd. W, Los Angeles CA 90039 USA. TEL: 1-818-247-2555. FAX: 1-818-247-2515. EMAIL: sales@graffitiremovalinc.com. WEB: www.graffitiremovalinc.com



World's Best Graffiti Coating

An extremely DURABLE and LONG LASTING, PROTECTIVE coating for brick, stone, masonry, timber and natural building surfaces

Product Data Sheet

Product Code: WB0070

Issued: August 8, 2016

PRODUCT DESCRIPTION

World's Best Graffiti Coating (WBGC) is a water based all-weather, long-term SACRIFICIAL protection, formulated for most types of surfaces. Provides durable protection against spray paint, marker / felt tip pens pollution and grime. Also provides protection against salt and sea type moisture.

Correctly applied, life expectancy against graffiti is generally 7 years but it can be effective up to 10 years.

This protective coating is permeable and allows the surface to breath. Prevents graffiti from penetrating into the substrate.

The surface must be re-protected following graffiti removal which can be done immediately to a damp (not wet) surface.

WBGC is readily biodegradable according to OECD test 302 B.



Historic Buildings



Decorative Sound Walls



Feature Walls



Wooden Fences



Split Face / Cinderblock



Natural Stone

FEATURES & BENEFITS

- Safe, quick and easy to apply by spray, brush or roller.
- Fast drying time.
- Makes getting graffiti off walls a pleasure.
- Virtually invisible / matte finish



FEATURES & BENEFITS cont...

- Non toxic and virtually odorless.
- Ideal for heritage buildings.
- Can be used on porous and non porous substrates.

INSTRUCTIONS FOR USE

Preparation

Clean off both graffiti and other contamination, such as road grime, grease, wax, oil and paint residue etc. from substrate.

It is normal best practice to mask and protect windows in a suitable manner.

Exterior Protection

Shake or stir product well prior to use. WBGC can be applied with any of the following: rollers, paint brush, low-pressure sprayer or airless sprayer. Two coats are usually applied.

NOTE: Allow some intermediate drying between coats.

WBGC can be applied to a damp, not wet surface. Runs and/or excessive application can easily be washed off with water, following completion of work.

FOR EXPERT TECHNICAL ADVICE ON YOUR JOB,
PLEASE CALL 1-818-247-2555 OR
EMAIL SALES@GRAFFITIREMOVALINC.COM



Urban Restoration Group US Inc. (URG US INC) maintains Safety Data Sheets (SDS) on all of its products. The SDS contain information that you will need to protect yourself, your employees and customers against health or safety hazards associated with our products. URG US INC requires that you obtain a copy of the respective SDS prior to using or transporting our products. The information in this Product Data Sheet is based on data that we believe to be reliable and is offered in good faith, but without guarantee, and subject to the terms and conditions set forth in URG US INC's Product Data Sheet and any additional documentation provided by URG US INC's, as ultimately the conditions and methods of the use of URG US INC's products are beyond URG US INC's control.

URBAN RESTORATION GROUP US INC MAIL: 1146 N Central Ave. #531, Glendale CA 91202 USA. WAREHOUSE: 5439 San Fernando Rd. W, Los Angeles CA 90039 USA. TEL: 1-818-247-2555. FAX: 1-818-247-2515. EMAIL: sales@graffitiremovalinc.com. WEB: www.graffitiremovalinc.com



World's Best Graffiti Coating

An extremely DURABLE and LONG LASTING, PROTECTIVE coating for brick, stone, masonry, timber and natural building surfaces

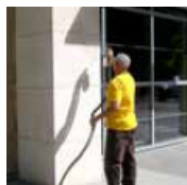
Product Data Sheet

Product Code: WB0070

Issued: August 8, 2016



Handheld Pump-up Sprayer



High Volume Low Pressure Sprayer (HVLP)



Airless Sprayer

Interior Protection

Some painted substrates can be protected using a roller or with a low-pressure spray in combination with a brush or roller. The protection is applied three times.

APPLICATION

Use the product as provided. Do not dilute. Walls can be dampened during hot weather to assist application.

This product information is intended as a guide for use of this product. Urban Restoration Group US Inc. cannot give any guarantee for end result achieved. The applicator of the product shall carry out testing and be responsible for the result.

COVERAGE GUIDELINES

Varies dependent upon the porosity of surface material.

- Concrete, brick or similar: approx. 500 sq ft (46.5 sq m) per gal per coat.
- Limestone, sandstone, plaster or other soft absorbent surfaces: approx. 360 sq ft (35 sq m) per gal per coat.
- Painted surfaces: approx. 640 sq ft (60 sq m) per gal per coat

2 coats are recommended.

Drying Period

The protected surface will be water and graffiti-resistant after 2 hours and dry after 4 hours. Ultimate protection will be achieved after 72 hours.

Appearance on surface

Transparent, mostly invisible dependent on type of surface. UV-resistant. Weather / water / graffiti resistant. Before commencing large scale use always test first to ensure finish is satisfactory. Some building materials could darken or become shiny.

EXTERIOR GRAFFITI REMOVAL

Method 1: Normal substrate.

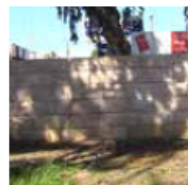
Remove graffiti with hot water and high pressure (~ 90°C / 200°F & 90-50 bar / 1300-2175 psi). For faster removal, use World's Best Graffiti Removers in conventional manner. Re-protect cleaned area.



Filled-in bubble writing on previously coated masonry wall.



Graffiti is removed using just hot water at 2000 PSI / 2-3 gal per minute.



Blue spraycan on pre-coated random wall. Brush on BBSM.



Rinse with cold water.



Once clean, re-apply WBGC.

INTERIOR GRAFFITI REMOVAL

Removal from Painted Substrate

Brush on SENSITIVE SURFACE REMOVER to small areas at a time and wipe off with a damp cloth completing each area before proceeding further. Re-apply WORLD'S BEST COATING.



Urban Restoration Group US Inc. (URG US INC) maintains Safety Data Sheets (SDS) on all of its products. The SDS contain information that you will need to protect yourself, your employees and customers against health or safety hazards associated with our products. URG US INC requires that you obtain a copy of the respective SDS prior to using or transporting our products. The information in this Product Data Sheet is based on data that we believe to be reliable and is offered in good faith, but without guarantee, and subject to the terms and conditions set forth in URG US INC's Product Data Sheet and any additional documentation provided by URG US INC's, as ultimately the conditions and methods of the use of URG US INC's products are beyond URG US INC's control.

URBAN RESTORATION GROUP US INC MAIL: 1146 N Central Ave. #531, Glendale CA 91202 USA. WAREHOUSE: 5439 San Fernando Rd. W, Los Angeles CA 90039 USA. TEL: 1-818-247-2555. FAX: 1-818-247-2515. EMAIL: sales@graffitiremovalinc.com. WEB: www.graffitiremovalinc.com



World's Best Graffiti Coating

An extremely DURABLE and LONG LASTING, PROTECTIVE coating for brick, stone, masonry, timber and natural building surfaces

Product Data Sheet

Product Code: WB0070

Issued: August 8, 2016

INTERIOR GRAFFITI REMOVAL cont...

Removal from Porous Substrate

Apply SENSITIVE SURFACE REMOVER. Rinse off with hot water and wet-vac.

Re-protection of Cleaned Surface

When removing graffiti, the protective coating is also normally removed. Re-apply 2 coats of WBGC.

TEMPERATURE USAGE

Ideal temperature for external application should be between 45°-95°F / 8°-35°C. Minimum temperature is 40°F.

Relative humidity must not exceed 95%.

NB: Fresh concrete has to cure for at least 28 days before protection.

TECHNICAL DATA

Composition

Water carried paraffin wax dispersion.

5-10% solid contents.

Properties

Color: White.

Odor: Odorless.

PH: 8

Storage: Store in a frost-free environment in original container.

Shelf Life: Approximately 3 years.

Precaution: Use protective clothing and gloves.

DOT Markings: Not classified as dangerous.

See SDS for further information.

LEGAL DISCLAIMER

Read and follow label directions and observe all safety precautions in the use of this product. Because conditions of product use are outside of our control and vary widely,

the following is made in lieu of all express or implied warranties: This product will conform to Urban Restoration Group US, Inc.'s published product specifications and be free from defects in material and manufacture on the date of purchase.

Except where prohibited by law, Urban Restoration Group US Inc., further disclaims, and shall not be liable for any incidental, special, consequential or indirect loss or damage and/or personal injuries including death arising from the use of this product or the cost of labor involved in its application or any reapplication of product that is replaced, regardless of the legal theory asserted.

SELLER MAKES NO WARRANTY, EXPRESS OR IMPLIED, CONCERNING THE USE OF THIS PRODUCT OTHER THAN INDICATED ON THE LABEL. BUYER ASSUMES ALL RISK OF USE AND/OR HANDLING OF THIS PRODUCT AND MATERIAL WHEN SUCH USE AND/OR HANDLING IS CONTRARY TO LABEL INSTRUCTIONS. NO OTHER WARRANTIES ARE MADE, EXPRESS OR IMPLIED, INCLUDING WITHOUT LIMITATION WARRANTIES AS TO MERCHANTABILITY OR FITNESS FOR A PARTICULAR PURPOSE. IN ALL EVENTS, URBAN RESTORATION GROUP US, INC'S LIABILITY SHALL BE LIMITED SOLELY TO THE REPLACEMENT OF THE PRODUCT PURCHASED.

This limited warranty may not be modified or extended by manufacturer's representatives, distributors or dealers of Urban Restoration Group US, Inc. products. This warranty gives the purchaser specific legal rights, as well as rights which may vary from state to state. Urban Restoration Group US, Inc. specifically disclaims any and all other obligations or liability to any party relative to the sale, use or application of its products.

If this product is defective upon your receipt, your exclusive remedy shall be, at Urban Restoration Group US, Inc.'s option, to replace the product or refund the purchase price of the Urban Restoration Group US, Inc. product.

CONTACT MANUFACTURER

Urban Restoration Group US Inc.
5439 San Fernando Rd. W., Los Angeles CA 90039 USA
Tel: +1-818-247-2555. Fax: +1-818-247-2515
Email: sales@graffitiremovalinc.com
Web: www.graffitiremovalinc.com



Urban Restoration Group US Inc. (URG US INC) maintains Safety Data Sheets (SDS) on all of its products. The SDS contain information that you will need to protect yourself, your employees and customers against health or safety hazards associated with our products. URG US INC requires that you obtain a copy of the respective SDS prior to using or transporting our products. The information in this Product Data Sheet is based on data that we believe to be reliable and is offered in good faith, but without guarantee, and subject to the terms and conditions set forth in URG US INC's Product Data Sheet and any additional documentation provided by URG US INC's, as ultimately the conditions and methods of the use of URG US INC's products are beyond URG US INC's control.

URBAN RESTORATION GROUP US INC MAIL: 1146 N Central Ave. #531, Glendale CA 91202 USA. WAREHOUSE: 5439 San Fernando Rd. W, Los Angeles CA 90039 USA. TEL: 1-818-247-2555. FAX: 1-818-247-2515. EMAIL: sales@graffitiremovalinc.com. WEB: www.graffitiremovalinc.com