



PUBLIC ART SOLUTION

ALTO™ Sublimated Aluminum



BRIGHT AND DURABLE GRAPHICS

Developed by SH in 2007, ALTO™'s innovative process uses a proprietary sublimation technology to fuse graphics with tough, powder-coated aluminum. An eco-friendly and extremely durable product, ALTO™ has a reputation of being a premiere outdoor material due to its vibrant, fade-resistant colors, ease of installation and easy maintenance. The graphic is cooked into the paint instead of simply placed on the surface and there are no post-sublimation coatings. The powder-coated base protects the aluminum from rust and corrosion. ALTO™ graphics can be applied to flat, texture or three-dimensional aluminum panels.

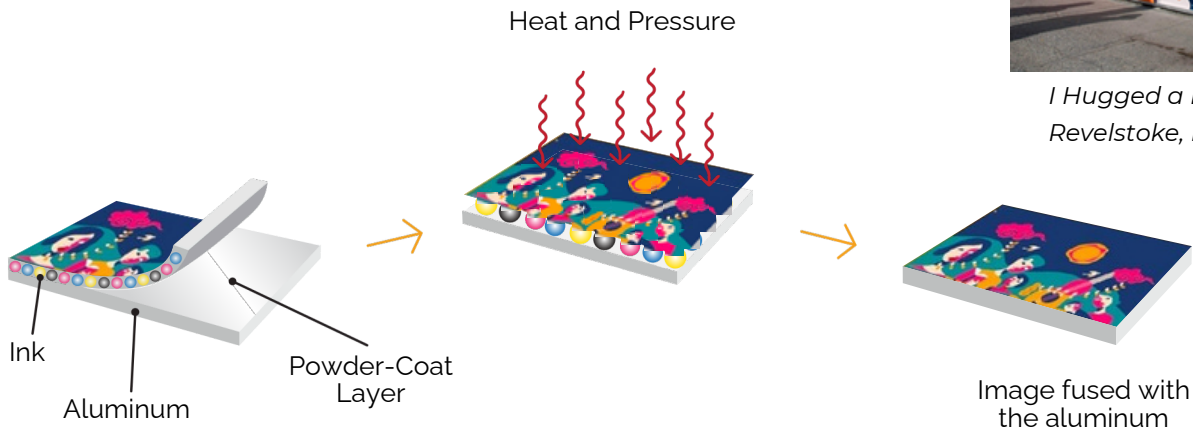


La Correspondance des Strates, Metro Villa Maria, Montreal, QC



I Hugged a Bear in Revelstoke, Revelstoke, British Columbia

ALTO™ SUBLIMATION PROCESS



Common ALTO™ Applications:

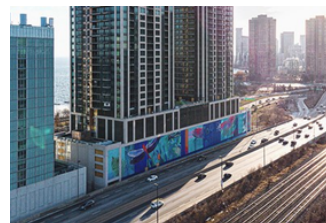
Public Art



Interpretation



Cladding



Designer projects





FEATURES AND BENEFITS OF ALTO™



GRAFFITI
RESISTANT



UV
PROTECTION



EASY
MAINTENANCE



FADE
RESISTANT



ECO
FRIENDLY

TEAM OF DESIGNERS

We have our own in-house team of designers. They develop numerous fastening systems, assembly systems, and much more. They support our teams in all the most complex and personalized projects. In addition, they create an approval drawing before each project is printed. This way, you can have a technical rendering of your panels before they are sent to production.

PUBLIC ART NETWORK

ALTO has been involved in the world of public art for several years. From Montreal to California, we've developed projects in every conceivable setting. Over time, we've developed a significant network of partners in the field. We can support you with references for project management, installation, and much more.



Bernache, La Grande-Envolée Park, St. Omer, QC.



ART REDEFINED

ALTO™ is a top material for reproducing both digital art and physical pieces like paintings, collages photographs, and more.



VIBRANT COLORS

ALTO™ meets the aesthetic expectations of artists, architects and designers with sublimated colors that are vibrant, consistent and rich.



DURABLE

ALTO™'s ability to withstand hot and cold climates, humidity, UV exposure and heavy traffic has made it a trusted brand across North America.



EASY TO INSTALL

ALTO™ is easy to install and low maintenance. No harsh chemicals are needed for cleaning, making it safe for public use.



PUBLIC ART SOLUTION

ALTO™ Sublimated Aluminum



PERFORMANCE

Our innovative ALTO™ process meets or exceeds Qualicoat, ASTM, ISO and DIN International standards. See below for more detailed information.

Overlay Performance

The paint used for custom graphics is certified Qualicoat Class 2 Super Durable for strength and superior fade resistance.

Resistance to fading

Over the past ten years, many of our projects have gone through long-term exposure tests and showed excellent resistance to aging and minimal fading.

Accelerated aging xenon +Water test ASTM G155

Laboratory accelerated aging tests (QSUN) demonstrate excellent resistance to aging and showed very little discoloration after more than 2,000 hours, the equivalent of 10 years of outdoor exposure.

Fire resistance ASTM E84

ALTO™ sublimated aluminum pieces don't require a fire-resistance grade, as they are fabricated from a solid aluminum core that does not burn. This grade of aluminum is very resistant to heat, and the overlay does not accelerate fire and flame growth.

Tests with our overlay revealed the following information:

- **Flame spread classification: Class 1 or A (0-25).**
- **No flame propagation. RINA certification**

Impact resistance ASTM D2794

Our overlays offer excellent shock and impact resistance due to its physical properties and superior adherence to aluminum. Tests passed with no detachment.

Resistance to corrosion

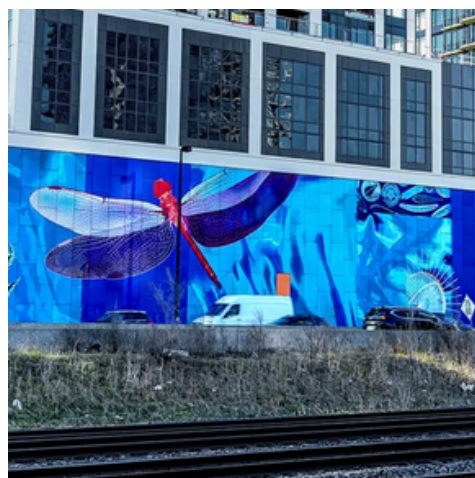
- ISO 3231 Kesternich test
- ISO 9227 Salt test
- DIN 50017 High Humidity test

Our overlays are resistant to water, humidity and corrosion in addition to protecting the aluminum.

No penetration of more than 1 mm or overlay delamination.



Madison Landing & Madison Highlands,
Orlando, FL & Tampa, FL



Motion in Air (Ma), Toronto, ON



Errances à Verdun, Verdun, QC



LIMITED ALTO PANELS WARRANTY

1. LIMITED WARRANTY

- a.** Kalitec warrants that, under normal use and installation complying with recommendations outlined in our specifications, ALTO™ products are free from defects in workmanship for a period of 120 months (10 years), commencing from the date of shipping. Kalitec guarantees to the original purchaser that, from the date of purchase through the limited warranty period, your ALTO™ panel: will not stain; will be free from manufacturing defects. Kalitec guarantees that the product will not delaminate, peel, blister, or crack for the duration of this warranty.
- b.** Some degradation of materials and graphics over time is considered normal wear. Kalitec warrants that, at the end of the warranty period, the product will be in acceptable condition for commercial use when viewed from normal distances.
- c.** We guarantee that for the time of the warranty, the product will not fade in color in such a way as to significantly affect the appearance of the surface.
- d.** The surface will have a 30% minimum gloss retention of the original using a 60-degree gloss meter reading per AAMA 2604 specifications.
- e.** Every ALTO™ product Kalitec ships has been carefully inspected and have met with our product limitations.

2. WARRANTY LIMITATIONS

- a.** This limited warranty does not cover damage caused by: improper care and maintenance (see ALTO™ Specifications), accidents, abuse and gouging, misuse.
- b.** Damages caused from natural disasters and lightning strikes; heavy machinery, or other vehicles, power tools, projectile weapons, are not covered by this limited warranty..
- c.** Kalitec does not guarantee installations.

3. CUSTOMER REMEDIES

Kalitec and its suppliers' entire liability and Customer's exclusive remedy shall be, at the Company's option, either (a) return of the price paid on a pro-rated basis, or (b) repair or replacement of the tile that does not meet this Limited Warranty and which is returned to the Company with a copy of Customer's receipt and detailed description of the issue with clear pictures. This Limited Warranty is void if damage of the product has resulted from accident, and abuse. Any replacements will be warranted for the remainder of the original warranty period. In case of product discontinuation, Kalitec will, at its discretion, provide compensation on a pro-rated basis. No material may be returned to Kalitec premises without the Company's written consent. The shipping materials for return inspection as well as those related to installing, uninstalling or reinstalling the product are the responsibility of the buyer. No other warranty is offered. This warranty can only be amended by the owner of Kalitec. Kalitec reserves the right to modify its limited warranty at any time in its sole discretion.

4. NO OTHER WARRANTIES

To the maximum extent permitted by applicable law, kalitec and its suppliers disclaim all other warranties, either express or implied, including, but not limited to implied warranties of merchantability and fitness for a particular purpose, with regard to the product and any related written material. This limited warranty gives customer specific legal rights. The customer may have other rights depending on the jurisdiction.

5. NO LIABILITY FOR DAMAGES

To the maximum extent permitted by applicable law, in no event shall kalitec or its suppliers be liable for any damages whatsoever (including without limitation, special, incidental, consequential, or indirect damages for personal injury, loss of business profits, business interruption, or any other pecuniary loss) arising out of the use of or inability to use this product, even if kalitec has been advised of the possibility of such damages. In any case, kalitec and its suppliers' entire liability under any provision of this agreement shall be limited to the amount actually paid by you for the product. Because some jurisdictions do not allow the exclusion or limitation of liability for consequential or incidental damages, the above limitation may not apply to you.