



REQUEST FOR QUALIFICATIONS

Qualifications are requested from artists interested in creating a site-specific interior public artwork for the Translational Medicine Institute, part of Colorado State University's College of Veterinary Medicine and Biomedical Sciences. This opportunity is open to Colorado artists only.



Translational Medicine Institute, rendering

DEADLINE FOR SUBMITTAL: September 10, 2018

TOTAL ART BUDGET: \$39,000

NAME OF INSTITUTION: Colorado Creative Industries on behalf of Colorado State University

ABOUT COLORADO STATE UNIVERSITY

Founded in 1870 as the Colorado Agricultural College, Colorado State University is now among the nation's leading research universities, with annual research expenditures above \$300 million. Located in Fort Collins, Colorado's land-grant university currently enrolls about 33,000 total students, including 4,000 graduate students and 580 Professional Veterinary Medicine students, and has more than 1,800 faculty members working in eight colleges. More information is available at www.colostate.edu.

PROJECT DESCRIPTION – ABOUT THE TRANSLATIONAL MEDICINE INSTITUTE

The Translational Medicine Institute is Colorado State University's newest state-of-the-art research facility, which promises medical innovations by harnessing the body's healing powers to help animals and people suffering from a wide range of disease. The facility – called the C. Wayne McIlwraith Translational Medicine Institute (TMI) – is named for an illustrious veterinarian who has built a remarkable clinical and research enterprise in orthopedic medicine for horses during nearly 40 years at Colorado State University. McIlwraith is an international pioneer in equine arthroscopic surgery and research into biological therapies based on living cells and their products, including novel protein and stem-cell therapies that help heal injured and degraded joints. Many of McIlwraith's findings regarding the diagnosis, prevention, and treatment of equine joint injury and disease have been translated into



orthopedic advancements for people – the succession known as “translational medicine.” The new building’s vision is to innovate medical discovery paradigms and solutions leveraging nature’s healing capacity.

The C. Wayne McIlwraith Translational Medicine Institute is uniquely positioned for discoveries in translational medicine, as biological therapies present a new therapeutic frontier. The institute will draw on established areas of CSU research expertise in orthopedics, biomedical engineering, immunology, infectious disease, surgical advances, and other medical fields, in order to fulfill its mission to create novel biologic therapies and learning opportunities uniquely focused on improving the lives of both animals and humans by fostering diverse collaborations.

TMI will have space for functioning research groups, including orthopedic, DOW stem cell lab, animal medicine, biomedical engineering, immunology, infectious disease, surgical advances, and other medical fields. The design will include specialized equipment, research space, clinical resources, and conference areas; will focus on research, education for post-secondary and practitioners, and business development. The TMI building is located on CSU’s South Campus, between the Diagnostic Medicine Center and the Orthopedic Research Center.

BUDGET: \$39,000

All costs associated with the public art project including, but not limited to, artist design fee, structural engineering, insurance, materials, fabrication, transportation, installation, building or site modifications, travel to and from the site, per diem expenses, project documentation, contingency to cover unexpected expenses and any other costs related to the project are covered by this budget. Selected semi-finalists will be invited to propose an artwork for the location listed below. Semi-finalists will receive \$1,000 as an honorarium for the creation of a design proposal.

OPPORTUNITIES FOR PUBLIC ART

The committee has selected a large vertical wall in the Translational Medicine Institute’s innovation space as the site for the commissioned artwork. The artwork must be two-dimensional or wall-mounted. The Selection Committee is open to artwork in a variety of media and artworks may protrude from the wall as long as the design is ADA compliant. As the focus of the building’s activities is on translational, cooperative medicine and innovation, the committee is interested in artworks that consider this spirit of innovation, in addition to the other multi-faceted uses of the building. Wall area pinpointed for the artwork is approximately 24 feet high by 14 feet wide.

The Selection Committee will consider the following:

- Artistic excellence
- Technical competence
- Conceptual compatibility
- Scale, material, form and content
- Resistance to general wear, vandalism, or theft
- Ease of maintenance, minimal and low cost maintenance



Artists who are residents of Larimer County and/or alumni of Colorado State University are encouraged to apply.

APPLICATION PROCESS

All applications for this project are being accepted through the online platform, CaFÉ™ (www.callforentry.org). No hard copy or emailed submissions will be accepted. The applicant will be asked to submit digital images of art (see below for more information), a resume, and a brief statement of interest. There is no application fee to apply or to use the CaFÉ™ online application system. Instructions on how to use CaFÉ™ and format images can be found at www.callforentry.org/image_prep.phtml. Assistance in using the CaFÉ™ system is available during regular business hours by calling 3036291166, 18885627232 or email cafe@westaf.org.

Digital Images. In order to be considered for this project, the applicant must electronically submit through the CaFÉ™ system no less than six (6) and no more than eight (8) digital images of previously completed artworks.

Resume: Submit a current résumé, via CaFÉ™, that outlines your professional accomplishments as an artist. If applying as a team, please submit a resume for each artist, with the lead artist's resume first.

Statement of Interest: A statement of interest of 500 words or less must be submitted via CaFÉ™. It should briefly outline the interest in the specific opportunity and applicable experience.

COLORADO ART IN PUBLIC PLACES PROGRAM

In 1977, the Colorado General Assembly passed the Art in Public Places Act requiring that 1% of the construction costs of new or renovated state-owned buildings be used to acquire works of art for permanent installation at the project site. Colorado Creative Industries is responsible for implementation of the law. All works of art commissioned pursuant to this request are owned by the State of Colorado via Colorado State University. De-accession of the public art, if necessary, will follow the policies and procedures established by Colorado Creative Industries.

ELIGIBILITY

All applicants must be legal residents of Colorado. The artist must have the skills and experience commensurate with the responsibility of successfully completing a major public art installation. The Program is open to all artists regardless of race, color, creed, gender, gender variance, national origin, age, religion, marital status, political opinion or affiliation, or mental or physical handicap.

SELECTION PROCESS AND SCHEDULE

The Art Selection Committee will review all complete submittals. A short list of semifinalists will be invited to prepare and present a final proposal in person and be paid an honorarium of \$1,000. Final selection(s) will be made from the semifinalists' proposals. The schedule is as follows:

Monday, September 10, 11:59 pm MST - Deadline for receipt of submittal via CaFÉ™ system

September/October 2018 – Selection panel meets to select Semi-Finalists

October 2018 – Notification of Semi-Finalist selection

January 2019 – Building opens



*Artwork installation will be arranged in correlation with CSU's Academic Calendar

QUESTIONS

If you require more information or clarification, please contact Ruth Bruno, Public Art Program Manager, at 303892-3813 or ruth.bruno@state.co.us.

ADDITIONAL SOURCES OF INFORMATION

<http://www.colostate.edu/>

<http://csu-cvmb.colostate.edu/academics/clinsci/translational-medicine-institute/Pages/default.aspx>

<http://csu-cvmb.colostate.edu/academics/clinsci/translational-medicine-institute/Pages/news.aspx>

<http://csu-cvmb.colostate.edu/academics/clinsci/translational-medicine-institute/Pages/timeline-and-milestones.aspx>

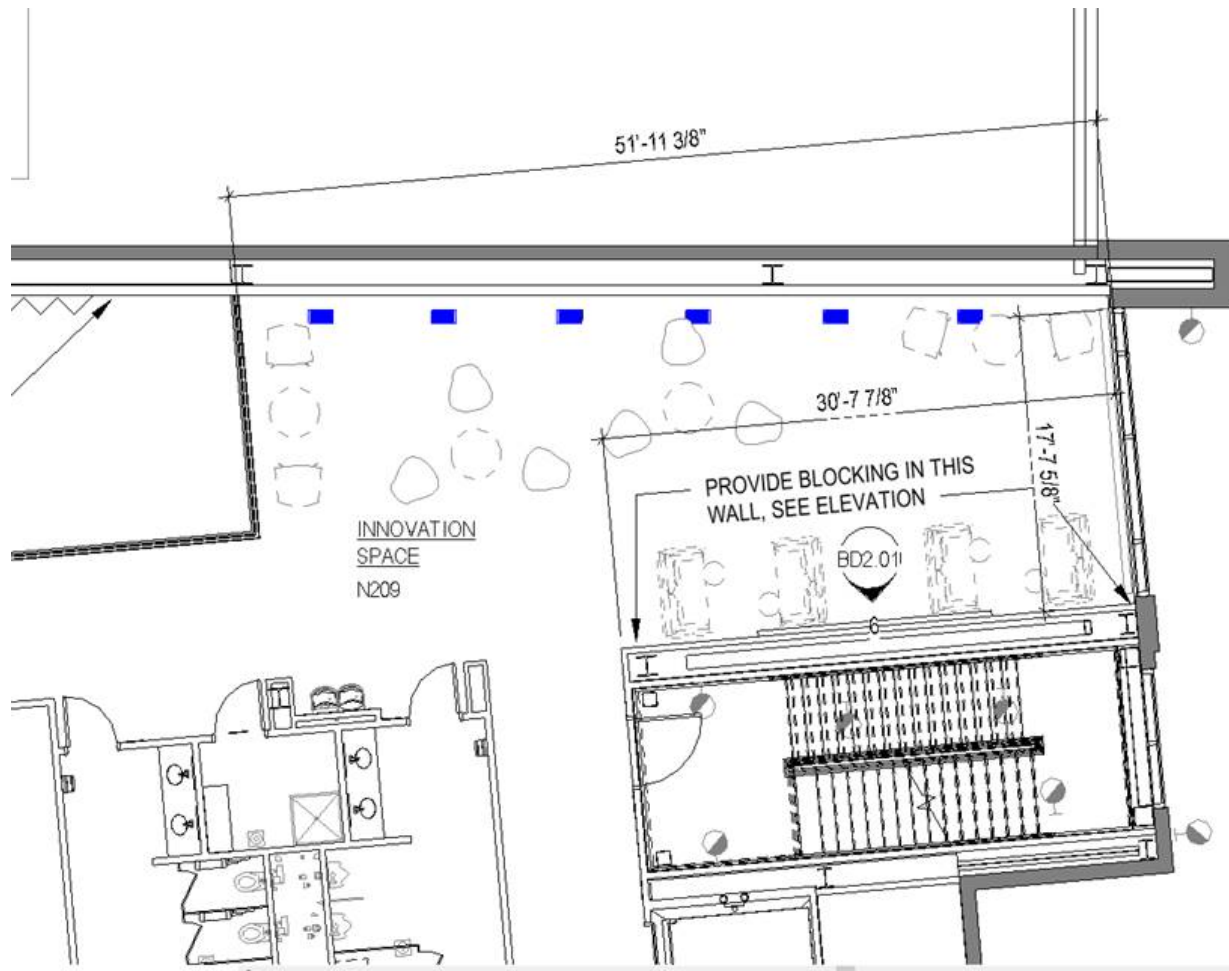
ADDITIONAL IMAGES



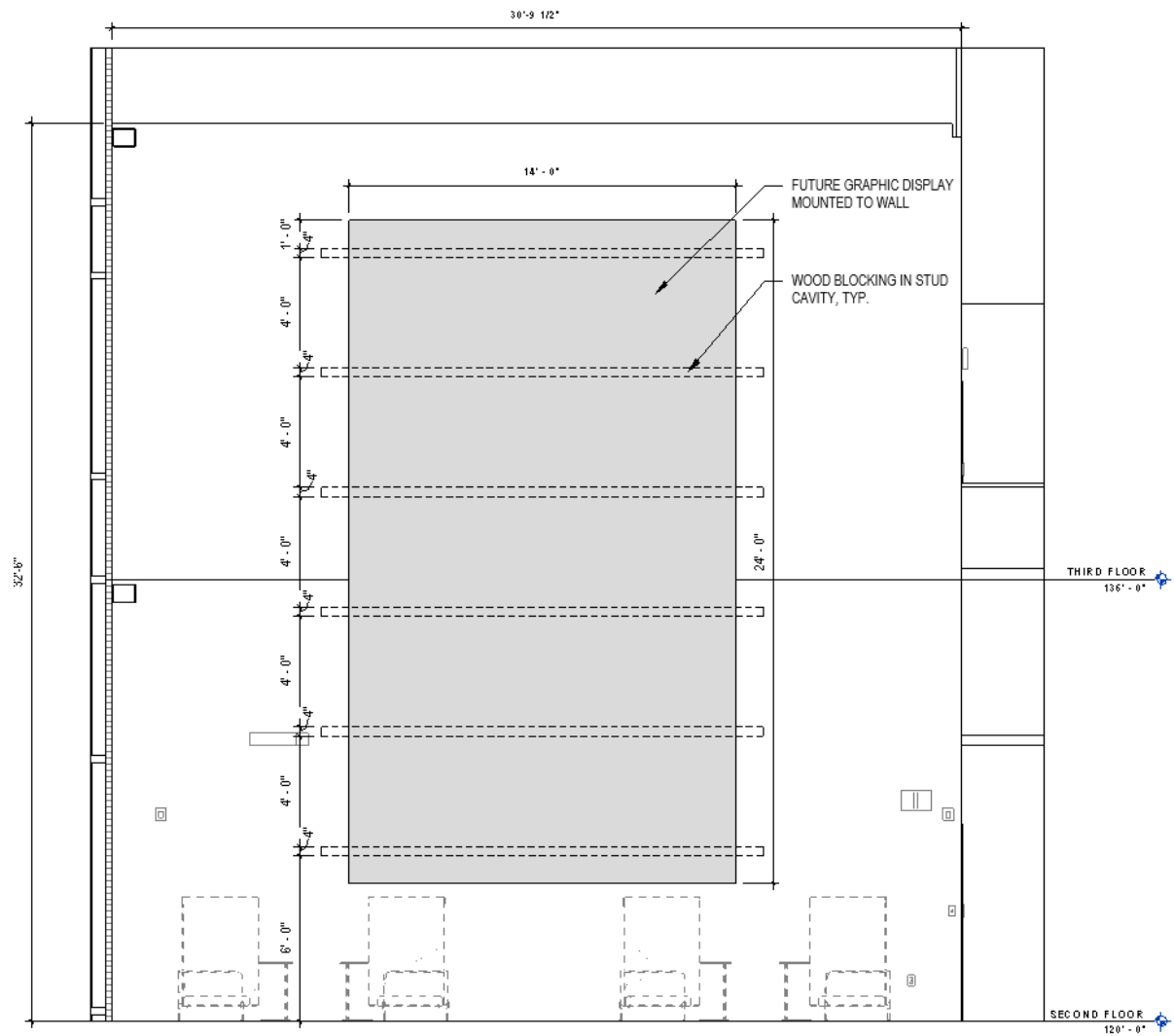
Translational Medicine Institute, artwork location (vertical wall in center), rendering



Translational Medicine Institute, artwork location (vertical wall on right), rendering



Translational Medicine Institute, artwork location (vertical wall at center right), plan



Translational Medicine Institute, wall elevation plan



Translational Medicine Institute, artwork location (back right), construction of space, as of 8/1/18



Translational Medicine Institute, artwork location, detail of construction, as of 8/1/18